

---

# STARCON



## Lifting Socket flat steel Anchor 0.4S to 4S

Lifting and handling systems for concrete elements.

User and design manual

## 1 Nomenclature

Symbol	Description	Unit
$\alpha$	Diagonal pull angle between sling and axial direction	°
$\beta$	Tilting angle between element and axial direction	°
°C	Temperature Celsius	°C
$\sigma_{ele}$	Concrete strength of the element at the time of lifting	MPa
$a$	Anchor plate width	mm
$a_{s2}$	Center distance between 2 bending of additional reinforcement	mm
$B$	Minimum plate thickness of a tile/slap/deck	mm
$b$	Anchor plate length	mm
$c$	Chamfer height	mm
$COG$	Center of gravity	[—]
$D$	Anchor diameter	mm
$D_{s2}$	Bending diameter of the additional reinforcement	mm
$d_{bar}$	Bending diameter of the diagonal pull bar	mm
$d_{s1}$	Diameter diagonal pull bar	mm
$d_{s2}$	Diameter of the additional reinforcement	mm
$F_S$	Load in diagonal direction	N
$F_Z$	Load in axial direction	N
$h$	Anchor total height	mm
$h_{s2}$	Center distance of additional reinforcement	mm
$k$	The thickness of the recess former	mm
$l_{bar}$	Total length of the diagonal pull bar	mm
$l_{s2}$	Total length of the additional reinforcement	mm
$S$	Load group symbol (STARCON)	—
$S_Z$	Distance between anchors	mm
$t$	Anchor plate thickness	mm
$WLL$	Working Load limit	tonne

Table 1 Nomenclature

## Starcon Precast Concrete Design & Lifting Manual

1	Nomenclature .....	1
2	Identification.....	2
3	Introduction Starcon lifting socket flat steel anchor 0.4S to 4S. ....	3
4	Safety instructions before use .....	4
5	Advantages of the Starcon system. ....	4
6	Using the Starcon system.....	5
7	Safety factors for lifting systems: .....	6
8	General information .....	7
9	Design method.....	8
10	Recommend reinforcement for lifting socket flat steel anchors.....	12
11	Starcon lifting socket flat steel anchor for slab type element.....	14
12	General safety information when using the Starcon system. ....	16
13	Maintenance and inspection .....	18
14	Disposal / Recycling .....	19
15	Product data of Starcon lifting socket flat steel anchor .....	19
16	Product data of lifting loop with thread .....	20
17	Product data of Alpha inclined pull lifting loop .....	21
18	Product data of Goliath lifting loop .....	22
19	Product data of Nailing Plates 10mm thickness, plastic .....	23
20	EC – Declaration of Conformity of the Machinery.....	24

## 2 Identification

Table 2 provides insight into the revision number of this document. It facilitates tracking changes and ensuring version control for accurate referencing and updates.

Version	Responsible	Creator	Date	Comment
A	CERTEX Denmark	JLJ	12-02-2025	New documentation

Table 2 Revision table

## 3 Introduction Starcon lifting socket flat steel anchor 0.4S to 4S.

**Read this instruction manual before using the spherical anchor. Incorrect use can cause injury or danger!**

*Safety is paramount when using lifting devices and equipment.*

*Only trained individuals should operate them as per national law.*

*Familiarize yourself with the instruction manual before using the Starcon lifting system to ensure safe operation.*

*Adhering to these guidelines reduces the risk of accidents.*

*Consult relevant national regulations as they may supersede these instructions.*

*All individuals involved with the equipment must read and understand this manual.*

*Always keep the manual with the product. Contact information is provided on the last page.*

*Contact Certex for assistance or clarification.*



### **General concept of the use lifting socket flat steel anchor:**

The Starcon Lifting and Handling System consists of three key components: Starcon lifting socket flat steel anchor, Starcon lifting loop, and Starcon nailing plate shown on Figure 1.

To ensure proper placement of the lifting unit in the finished concrete product, the head of the Starcon Lifting Anchor is assembled into a corresponding Starcon nailing plate before pouring. Once the concrete reaches a strength of at least 15 MPa, the nailing plate can be removed, and lifting can commence at the factory. At the installation site, lifting can only begin once the concrete has reached a strength of at least 20 MPa. Contact CERTEX DK for lower strength values. Lifting can be initiated by attaching the respectably rated lifting loop to the head of the Starcon lifting socket flat steel anchor.

The Starcon lifting anchors and systems use the guidelines described in the German guidelines VDI/BV-BS 6205 and Technical Report CEN/TR 15728, combined with EN 13155-2009. This ensures the highest level of safety when using our products.

**Material:**

Steel.

**Surface treatment:**

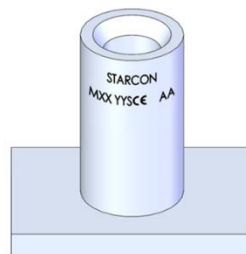
Untreated

Electro galvanized (Corrosion class: C3, ISO 12944).

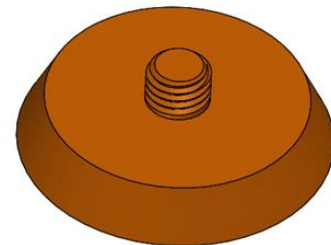
**Stainless steel AISI316** (Corrosion class: C5, ISO 12944).



Lifting loop



Lifting socket flat steel anchor



Nailing Plates 10mm thickness, plastic

Figure 1 Starcon lifting system.

## 4 Safety instructions before use



- The Starcon lifting anchor must only be installed in a Starcon former of the same rating.
- Starcon lifting anchors that are exposed of corrosion, or damaged must not be used.
- The Starcon lifting anchor must only be hoisted by a lifting unit of the same size.
- The Starcon lifting and handling system must not be used to lift more than the specified load.
- The Starcon lifting and handling system must not be used for personnel lifting.
- The Starcon products are designed for one-time lifting only.
- The Starcon lifting system must only be used by skilled, trained employees.
- A lifting accessory used with the lifting eye must be correctly marked and approved for lifting.
- Before use, check the weather conditions. Never operate the system outdoors if there is a likelihood of lightning in the area and avoid use in extreme weather conditions such as storms, heavy rain, or snowing.
- The concrete safety factor assumes a factory production control complying with EN13369. If these requirements are not fulfilled, a safety factor of  $\gamma = 2,5$  shall be used.
- All relevant concrete failure modes shall be verified by the pre casting manufacturer of the concrete elements; the different failure modes and verification methods are specified in EN13155 (Annex H).

## 5 Advantages of the Starcon system.

The Starcon system offers lifting socket flat steel anchor. These specialized fasteners are used to safely lift and secure precast concrete elements during transportation and installation.

The Starcon system is available in load groups 0.4S to 4S. It is typically embedded in the concrete element during the prefabrication stage and provides a secure lifting point for cranes or hoists. Lifting socket flat steel anchor allows for the attachment of lifting loops or other rigging hardware.

The system's efficiency has been proven through many years of successful use and numerous laboratory tests. Components are regularly tested during production and clearly marked with the maximum load. The lifting loop is individually tested and comes with a traceability batch code.

### 5.1 Note

The information in this manual is for guidance only, and the use of the manual does not in any way exempt the manufacturer from ensuring that the chosen lifting system is suitable for the intended purpose. The information and data listed in this manual only refer to original Starcon products supplied by *CERTEX DANMARK A/S*.

## 6 Using the Starcon system

The Starcon system comprises a wide range of anchors in a load group from 0.4S to 4S per anchor with various dimensions. The principle for using the system is the same for the entire range. The Starcon system consists of the following three main components:

### 6.1 Starcon Anchor

The Starcon anchor is a steel component for embedding with a specially designed foot for solid anchoring in hardened concrete. The head of the Starcon anchor, which is cylindrical with internal threads, connects to a Starcon lifting loop for lifting purposes. Starcon anchors are clearly labeled with sizes (e.g., 2.5S) and are available in different lengths. They undergo sample testing for defects, dimensional deviations, and tensile strength with a safety factor of minimum 3:1 for metallic failure.

### 6.2 Starcon Nailing plate

The nailing plate, typically made of round plastic components with a threaded end, must be carefully attached to the anchor head and positioned correctly before being securely fastened to the formwork. After the concrete cures and hardens, the nailing plate is removed, exposing the anchor head seated in a cylindrical depression. Since the nailing plate is typically stripped and unscrewed during removal, it's not normally reusable.

*Magnetic nailing plates, made of steel and plastic components, can be disassembled, unscrewed, cleaned, and stored for reuse after removal.*

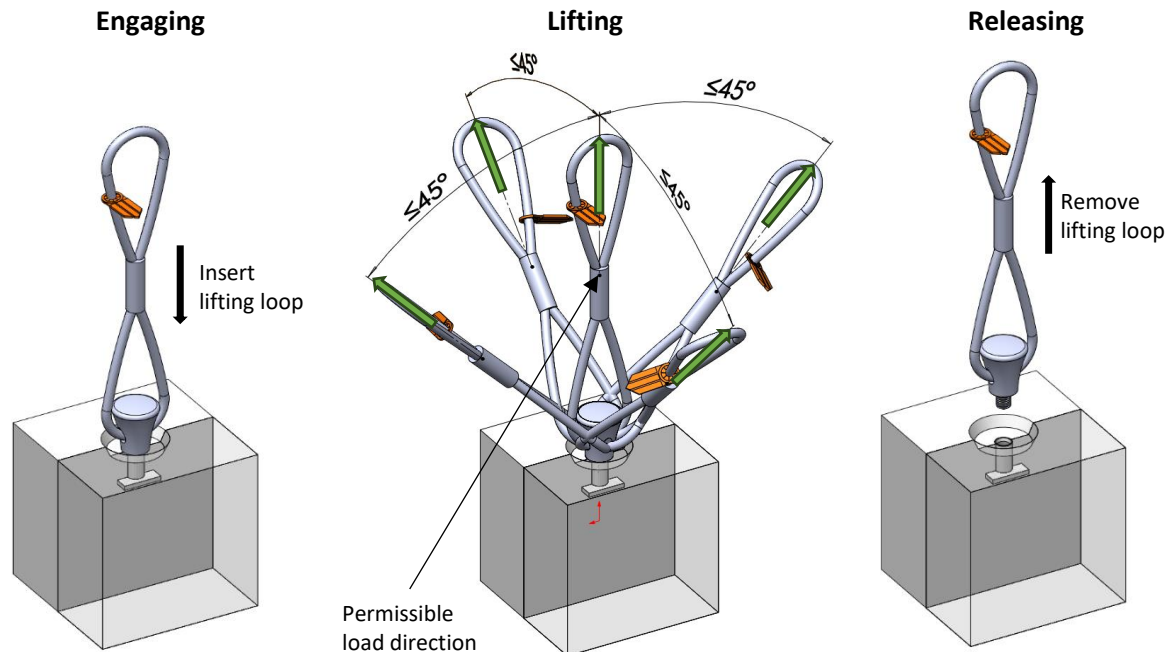
### 6.3 Starcon Lifting loop

Starcon lifting loops are devices used to attach cables or slings to objects for lifting. Typically made of forged steel, they come in various shapes and sizes to suit different lifting capacities and applications. Starcon lifting loops undergo rigorous testing to ensure their safety. Each loop is marked with its article number, identification number, and maximum working load, along with a clear indication of a 4:1 safety factor. Additionally, a certificate is issued with every delivery for complete documentation.

*An additional safety measure is that the Starcon system is available in several non-compatible load groups. It is not possible to incorrectly assemble components from different load groups, thus avoiding failure of the lifting arrangement.*

### 6.4 Lifting loop assembly instructions.

Screw the lifting loop by hand into the threaded hole of the anchor. Ensure the threads engage fully and easily without any cross-threading. If necessary for proper sling alignment during lifting, you may loosen the connection by one turn of the lifting loop. The system allows safe lifting in a vertical direction and up to a maximum tilt angle of 45 degrees in all directions. It is not to be used for turning or pitching a load. The instructions are shown and explained in Table 3.



Verify that the anchor load capacity matches the lifting loop. Manually insert the lifting loop into the anchor. Once hand-tight, visually check that the lifting loop sits flush against the anchor. You can begin the lifting process.

Lifting loops are designed to handle loads in vertical and tilted orientations, provided the load limits of the anchors are not exceeded. The tilt lift should normally not exceed 45 degrees in all directions. When using a spreader beam, the tilt angle of the load can be reduced.

Manually disconnect the lifting loop by turning it out of the anchor.

Table 3 The connection between the lifting loop and the lifting socket flat steel anchor is fast and easy

## 7 Safety factors for lifting systems:

For the calculations of the lifting system, the following safety factors shown Table 4 have been applied to ensure its reliability and safety. These factors, in accordance with the recommendation of EN13155, have been carefully selected as guidelines to ensure optimal safety during the system's operation.

Failure safety factors	
Steel failure of anchors	$SF_{Steel} = 3$
Concrete pull out failure	$SF_{concrete} = 2,5$
Failure in the lifting- eye	$SF_{Link} = 4$

Table 4 Failure safety factors

## 8 General information

This section provides essential details on the Starcon lifting anchor systems, offering clarity and guidance for safe and efficient usage.

### 8.1 Marking on the anchor

Each anchor is clearly labeled with its load capacity, thread size, and manufacturer's identification, ensuring easy and secure identification of the systems, even post-installation show on Figure 2.

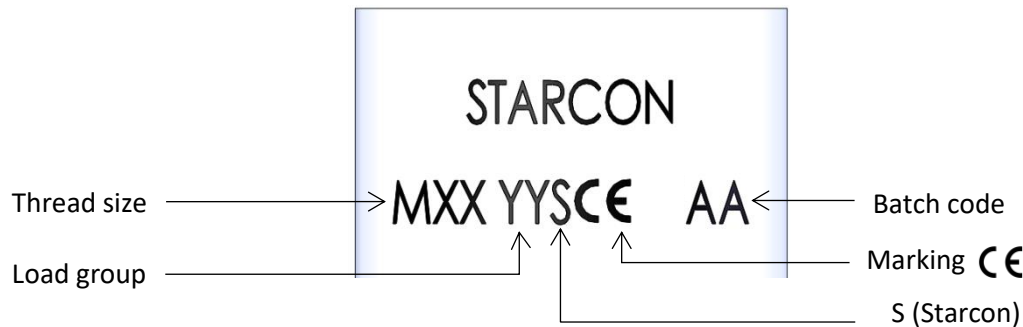


Figure 2 Marking on top of the lifting socket flat steel anchor.

### 8.2 Guidelines for Anchor Selection

When selecting anchors, it's essential to consider various factors to ensure safety and effectiveness. Tables provided contain crucial information such as maximum load capacities, edge distances, and installation values for different anchor types. Key points to consider:

- Weight of the precast element.
- The number of anchors.
- How the anchors are arranged.
- The load-bearing capacity of the anchors
- Sling handling angle.
- The diagonal pull properties of the anchors.
- Environmental impact at the use.
- Dynamic factor.

### 8.3 Guidelines for installation

For the Starcon lifting anchor systems to be appropriately installed, it is imperative to ensure compliance with specific technical criteria and prerequisites:

- Adherence to load capacity specifications of the anchor.
- Maintaining appropriate edge spacing.
- Ensuring the concrete grade is suitable.
- Verifying alignment with the load direction.
- Additional reinforcement requirements.

### 8.4 Guideline for load capacity

Load capacity of an anchor relies on several factors:

- The strength of the concrete at the moment of lifting, as determined by a cube-test with dimensions of 15 × 15 × 15 cm.
- The length of the anchor.
- The spacing between the anchor and the edges, both axially and along the edge.
- The direction of the applied load.
- The arrangement of reinforcement within the concrete structure.



## 9 Design method

This section covers the design method for lifting operations as well as illustrations of various lifting techniques. It describes when the different types of lifts occur, including axial lifting, diagonal lifting, tilting, and rotation of elements. Additionally, the casting process is discussed, including the transfer of load to the concrete using the anchor base, and the importance of correctly placing formwork and anchors during casting to avoid errors and risks. Warnings are given regarding the correct size of formwork and the risk of errors with incorrect sizes, which can lead to potentially dangerous situations.

### 9.1 Illustration of lifting methods

Figure 3 shows a description of when the different types of lifts occur:

- **Axial pull:** occurs in the same direction as the pulling force and happens within the range of  $0^\circ \leq \alpha \leq 10^\circ$ .
- **Diagonal pull:** occurs when slings/chains are angled between  $10^\circ \leq \alpha \leq 45^\circ$  relative to the lift.
- **Tilting:** occurs when the object needs to rotate around its COG on the short side of the element.
- **Turning:** occurs when the object needs to rotate around its COG on the long side of the element.

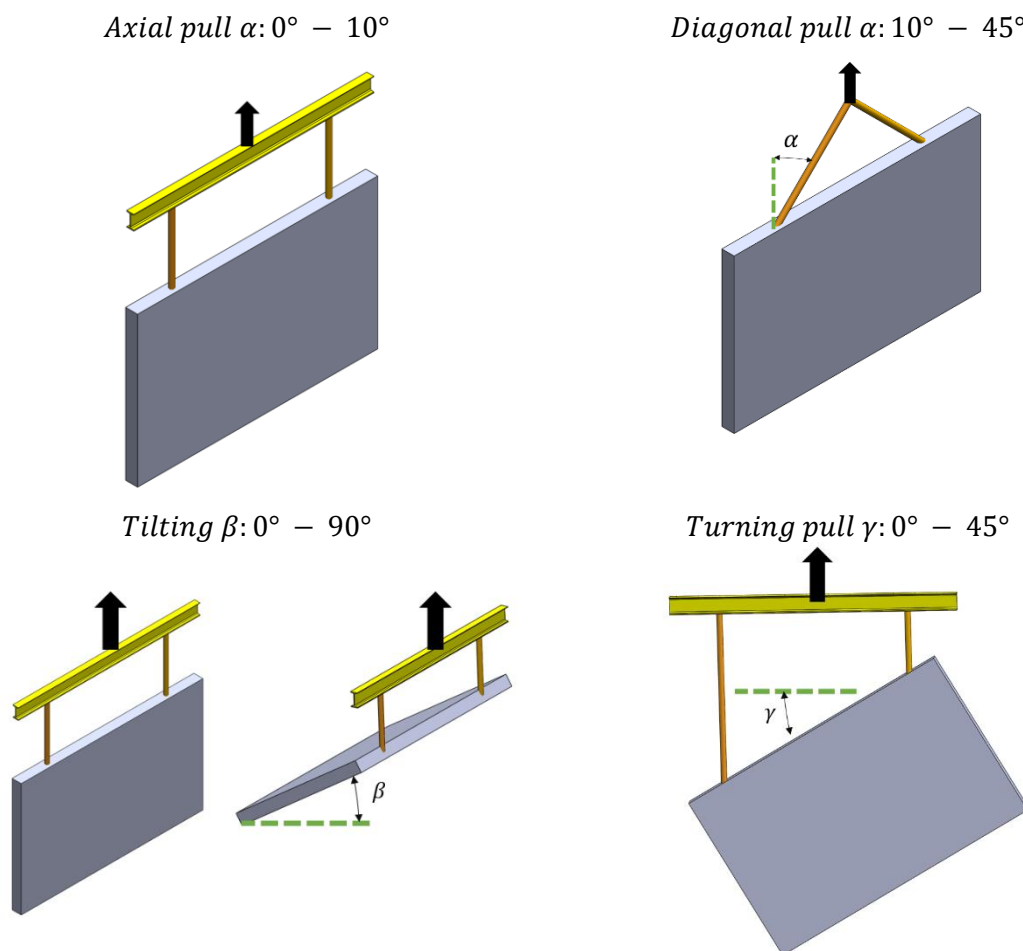


Figure 3 Lifting methods.

### 9.2 Load Transfer with Anchor Casting

Load transfer to the concrete is made easier by the anchor steel plate, which means it can handle heavy loads even with short anchors shown on Figure 4. However, with very thin elements, these concentrated loads can cause lateral spalling because of the strong pulling forces. The concrete must withstand a minimum resistance of 2.5 units before experiencing structural failure.

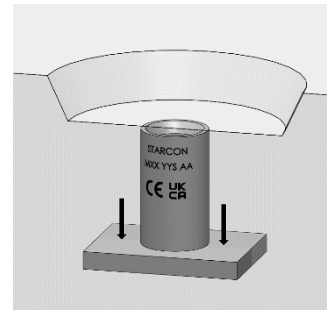


Figure 4 Load transfer.

#### 9.2.1 Correct placement of nailing plate and anchors during casting.

Caution: If the nailing plate is too small, it won't be compatible with the lifting equipment later. Conversely, if the recess block is too large, attaching the lifting equipment correctly will be impossible, increasing the risk of the lifting loop slipping out. This could lead to premature anchor failure and the subsequent collapse of the construction element. Always ensure the nailing plate size matches the identified appropriate size. Figure 5 illustrates the correct placement of the nailing plate in wet concrete to ensure optimal anchorage strength for the anchor.

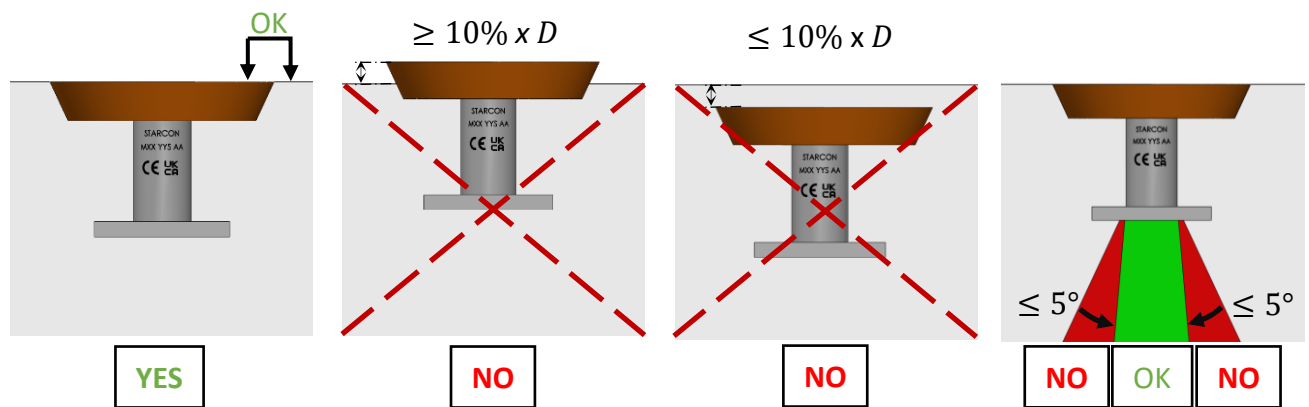


Figure 5 Correct placement of nailing plate.

## 9.3 Calculate load cases of removing from formwork and transport.

To ensure proper anchoring, each anchor must consider several factors: weight of the element, adhesion to the formwork, shock load, sling angle, and the number and position of the anchors.

When lifting a concrete unit from a nailing plate, consider the adhesion factor between the concrete and the formwork. For complex shapes, adhesion can increase anchor load, especially when concrete strength is at its lowest. Calculate the total weight of the elements in tons, including all equipment and accessories attached to the device.

### 9.3.1 Load case removing the formwork and transport of the element.

The tension force  $F_A$  in each anchor:

1. Load case when removing the element from the formwork: 
$$F_A = \frac{(F_Z + S \cdot P_a) \cdot F_s}{n}$$

2. Load Case during transport lifting of the element. 
$$F_A = \frac{F_Z \cdot F_s \cdot \varphi_{dyn}}{n}$$

Where,

- $F_Z$ : Weight of the concrete element in tonne
- $S$ : Surface area of the mould in contact with the fresh concrete ( $m^2$ )
- $P_a$ : Adhesion factor between the pouring box and concrete (See Table 6)
- $F_s$ : Sling angle factor (See Table 5)
- $n$ : Number of load-bearing anchors in the element.
- $\varphi_{dyn}$ : Dynamic factor of the element under transport

### 9.3.2 Sling angle factor ( $F_s$ )

The illustration in Figure 6 provides a visual explanation of how to measure the sling angle. Referencing Table 5, you can find the sling factor corresponding to the measured angle.

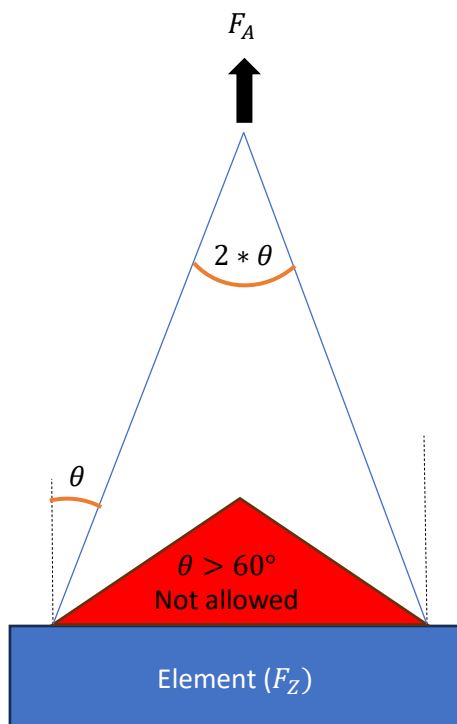


Figure 6 Sling angle factor illustration.

Sling angle degree ( $\theta$ )	Sling factor ( $F_s$ )
0°	1
10°	1,02
20°	1,07
30°	1,16
45°	1,41
60°	2

Table 5 Sling angle factor

### 9.3.3 Adhesion to formwork factors ( $Pa$ )

Adhesion factor between the form and concrete is shown in Table 6.

Form type	Adhesion( $\frac{\text{tonne}}{\text{m}^2}$ )
Lubricated steel formwork	$Pa = 0,1$
Varnished timber formwork	$Pa = 0,2$
Rough formwork	$Pa = 0,3$

Table 6 Adhesion factor to formwork

### 9.3.4 Dynamic factors ( $\varphi_{dyn}$ )

If the concrete unit is handled or transported by mechanical equipment, it is exposed to shock/impact from gripping and transport over uneven ground. This factor can increase the anchor load several times its own weight. The correct load can be determined by adding the dynamic factor shown in Table 7

Lifting condition	Dynamic load factor $\varphi_{dyn}$
Static crane, rope speed <90 m/min	1
Static crane, rope speed >90 m/min	1,3
Lift and transport with mobile crane on smooth ground	1,75
Lift and transport with mobile crane on uneven ground	2
Transport with forklift or excavator over uneven ground	3

Table 7 Dynamic factor

### 9.3.5 The number and position of lifting points

The effective load carried by each anchor is typically calculated by dividing the total weight by the number of load-bearing anchors. However, this calculation assumes equal load distribution among all anchors. If the load distribution is unequal, the load to be carried by each anchor should be determined using static calculations as shown in Figure 7.

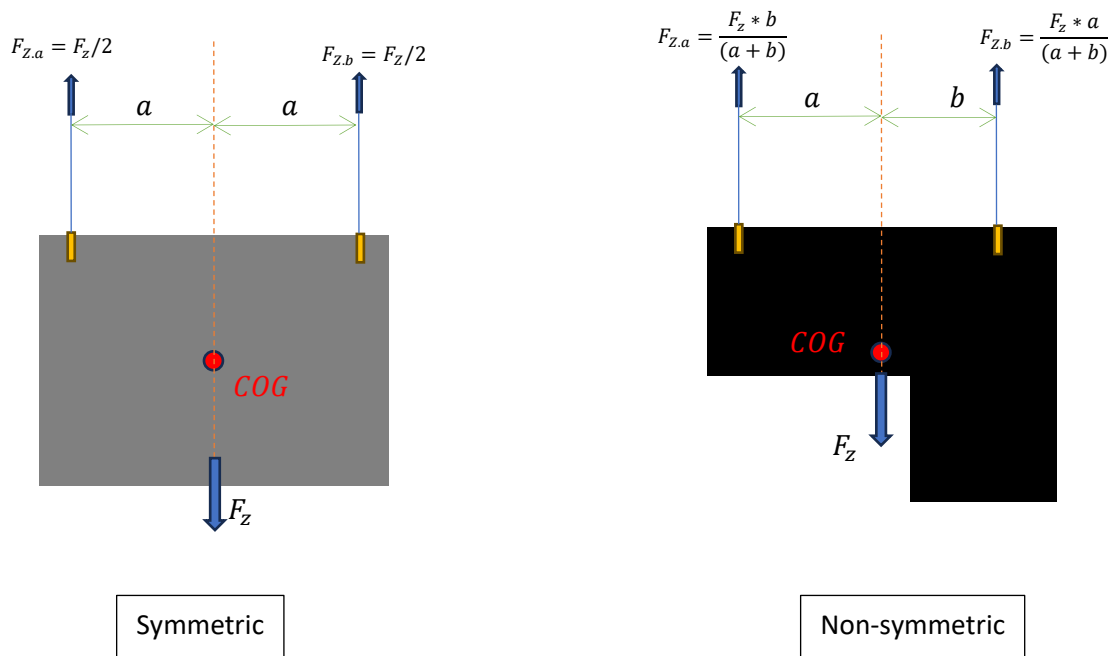


Figure 7 Calculation symmetric and non-symmetric loading element.

## 10 Recommend reinforcement for lifting socket flat steel anchors

Figure 8 shows how to correctly position the minimum reinforcement mesh inside the element. It highlights the importance of placing anchorage reinforcement for optimal strength. Additionally, it shows that the diagonal pull bar is required to effectively support the anchor under diagonal tension.

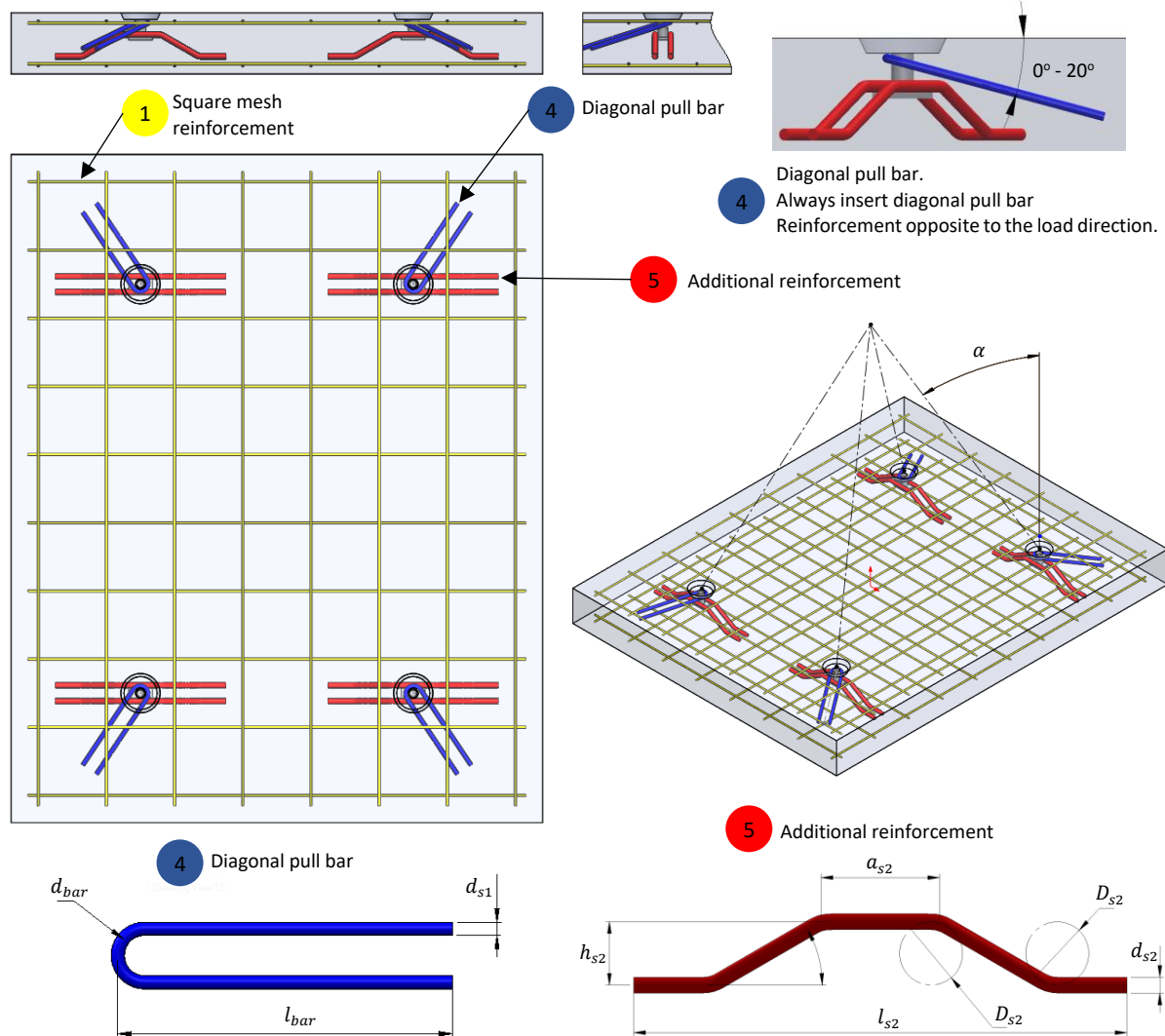
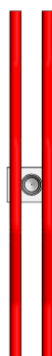


Figure 8 Reinforcement

Load group 0.4S - 2S



Load group 2.5S - 4S

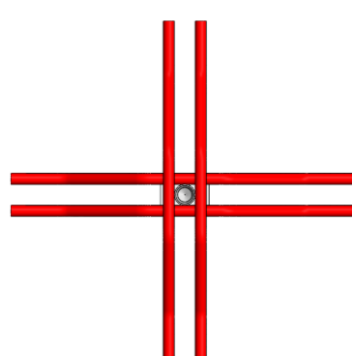


Figure 9 Axial tension reinforcement depending on the load group

Table 8 provides a detailed description of the correct placement of mesh and reinforcement within the concrete for each anchor type.

Load group	Thread size	① Square mesh reinforcement ①			④ Diagonal pull bar (required if $\alpha > 12.5^\circ$ ) ② ③						⑤ Additional reinforcement ④					
		No. of net	Wire dia. mm	Dist. mm	at $\alpha_{\max} 30^\circ$			at $\alpha_{\max} 45^\circ$			Number pcs	d <sub>s2</sub> mm	l <sub>s2</sub> mm	a <sub>s2</sub> mm	h <sub>s2</sub> mm	D <sub>s2</sub> mm
					d <sub>s1</sub> mm	d <sub>bar</sub> mm	l <sub>bar</sub> mm	d <sub>s1</sub> mm	d <sub>bar</sub> mm	l <sub>bar</sub> mm						
0.4S	M10	2	Ø12	240	Ø6	Ø24	150	Ø6	Ø24	150	2	Ø8	250	60	32	Ø32
0.5S	M12	2	Ø12	240	Ø6	Ø24	150	Ø6	Ø24	150	2	Ø8	250	60	32	Ø32
1.2S	M16	2	Ø12	240	Ø6	Ø24	250	Ø8	Ø32	200	2	Ø8	400	90	47	Ø32
2S	M20	2	Ø12	240	Ø8	Ø32	250	Ø8	Ø32	250	2	Ø10	500	90	48	Ø40
2.5S	M24	2	Ø12	350	Ø8	Ø32	350	Ø10	Ø40	300	4	Ø12	600	90	63	Ø48
4S	M30	2	Ø12	400	Ø10	Ø40	350	Ø12	Ø48	420	4	Ø14	700	140	68	Ø56
① To ensure optimal spacing, the utilization of concise anchors alongside a substantial minimum quantity of u-bars is mandated, with a requirement for intervals not exceeding 150 mm. ② To ascertain the necessity of diagonal pull reinforcement, refer to the load tables, particularly when $\alpha > 12.5^\circ$ ③ To ensure proper reinforcement alignment, in cases where the precast element's dimensions limit the diagonal pull reinforcement length, it's permissible to bend the last 40% of the bar into a loop shape. ④ Additional reinforcement is required for both axial and diagonal tension. This reinforcement is placed over the plate of the anchor and proper contact must be ensured. See Figure 9.																
<b>Disclaimer: The table serves solely as a guide. For accurate guidance and calculations, please contact <a href="http://www.Certex.dk">www.Certex.dk</a>.</b>																

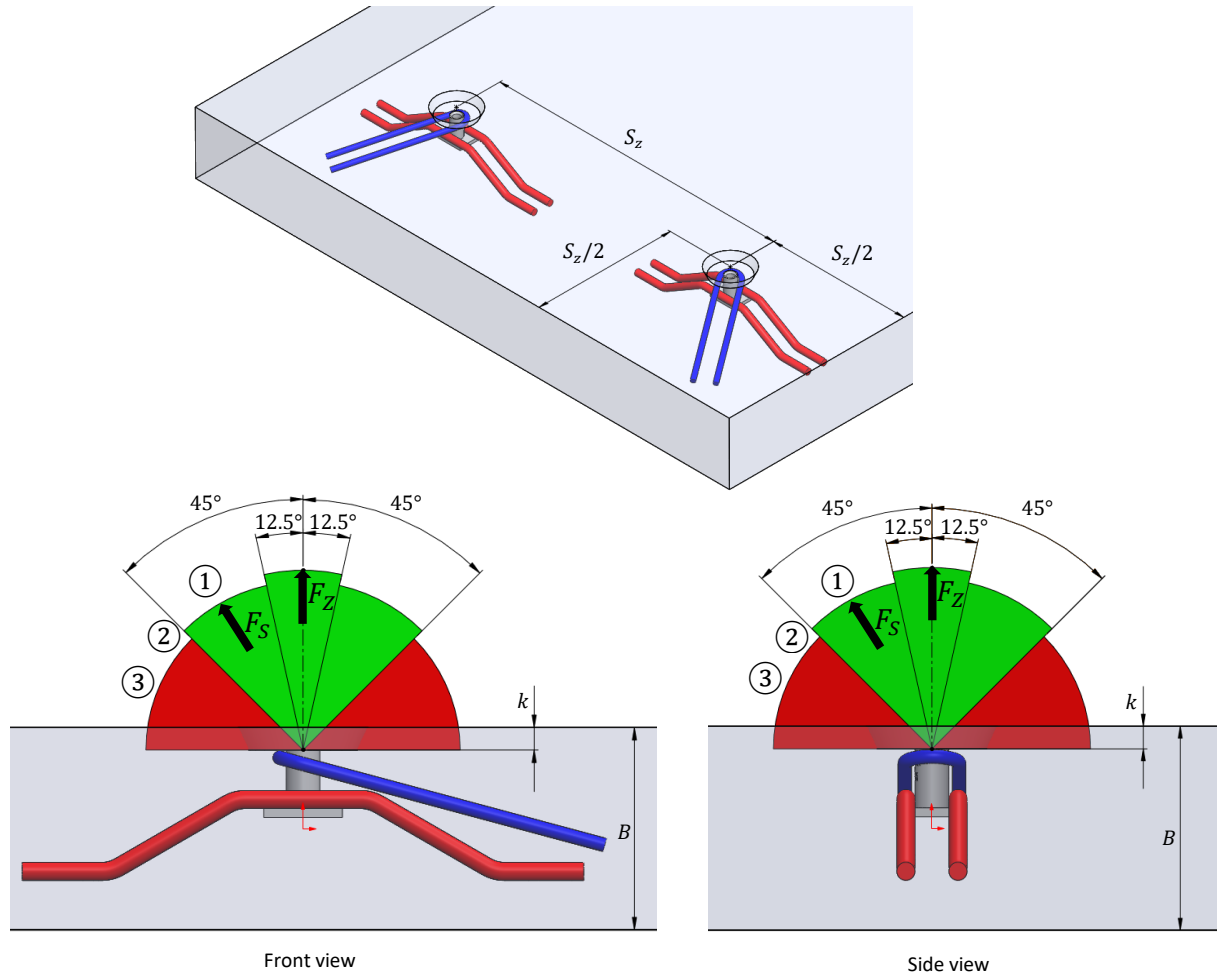
Table 8 Reinforcement data for elements

## 11 Starcon lifting socket flat steel anchor for slab type element

This section explains how much weightlifting socket flat steel anchors in slab type can support, using standard reinforcement requirements shown on Figure 10. It's designed to help understand how much weight they can handle.

**Reinforcement requirements see Table 8**

- ① Reinforcement mesh
- ④ Diagonal pull bars, only if  $\alpha > 10^\circ$



- (1) Diagonal tension at  $12.5^\circ \leq \alpha \leq 45^\circ$  without reinforcement is only allowed if:  
Concrete compressive strength ( $\sigma_{ele}$ ) is  $\geq 15 \text{ N/mm}^2$  and 3 times the minimum wall thickness,  
Concrete compressive strength ( $\sigma_{ele}$ ) is  $\geq 20 \text{ N/mm}^2$  and 2.5 times the minimum wall thickness,
- (2) For concrete strength with  $\sigma_{ele} \geq 23 \text{ N/mm}^2$ , the Safety Factor ( $F_S$ ) equals the Load Factor ( $F_Z$ ).
- (3) Diagonal tension with cable/chain spreading  $\alpha > 45^\circ$  is not permitted.

Figure 10 Standard reinforcement requirements.

## Lifting a Slab element

Table 9 provides information to assist in determining the appropriate anchors for lifting concrete elements under various loading conditions.

The following boundary conditions are utilized for the calculation:

- **1 anchor** symmetrically positioned to the center of gravity.
- **Dynamic factor** (site handling)  $\Gamma_{dyn} = 1.3$
- **Formwork adhesion** is not considered.

Load group	Thread size	Min. element thickness B mm	Min. distance between anchors S <sub>z</sub> mm	Load capacity [Ton] at concrete strength $\sigma_{ele} = 15 \text{ N/mm}^2$		Load capacity [Ton] at concrete strength $\sigma_{ele} = 20 \text{ N/mm}^2$	
				Axial tension $\alpha \leq 12.5^\circ$	Diagonal tension $\alpha \leq 45^\circ$	Axial tension $\alpha \leq 12.5^\circ$	Diagonal tension $\alpha \leq 45^\circ$
0.4S	M10	70	380	0.310	0.310	0.310	0.310
0.5S	M12	70	380	0.385	0.385	0.385	0.385
1.2S	M16	90	600	0.731	0.892	0.846	0.923
2S	M20	100	720	1.138	1.20	1.315	1.385
2.5S	M24	120	880	1.923	1.923	1.923	1.923
4S	M30	140	1040	3.077	3.077	3.077	3.077
$\sigma_{ele}$ Stands for concrete element strength at time of lifting.							
Disclaimer: The table serves solely as a guideline. For accurate guidance and calculations, please contact <a href="http://www.Certex.dk">www.Certex.dk</a> .							

Table 9 Standard reinforcement requirements



## 12 General safety information when using the Starcon system.

General safety information when using the Starcon system.



- Ensure that the marking on the Starcon lifting unit always points in the direction of pull during lifting.
- The lifting machine must be approved to lift at least the maximum applied load + the weight of the Starcon lifting and handling system + any hoisting accessories.
- Lifting movements must be smooth; no sudden or abrupt changes in direction with the lifting machine should be made during a lifting operation, as this can lead to pendulum movements of the load, causing crushing hazards or dropping of the load.
- Where there is a risk of crushing between the load and objects, building parts, machinery, etc., the operator must not be in the danger zone.
- The operator's work area must be flat and free of obstacles that could pose a tripping hazard.
- When depositing the load, the operator must ensure this occurs on a flat and stable surface.
- Only when the load has been deposited and secured the Starcon lifting unit is completely unloaded may it be released and lifted free.
- Before each lift, ensure that both the Starcon lifting unit and the Starcon lifting anchor embedded in the concrete product are free from dirt that could reduce grip.
- Never insert arms or feet under a concrete product.
- Concrete products must never be dragged, only lifted.
- No modifications to the Starcon lifting and handling system may be made without written permission from the manufacturer.
- The operator must always ensure that the connection between the lifting machine and/or any hoisting accessories and the Starcon lifting unit is correct and secured against unintentional detachment.
- The operator must always ensure that the connection between the Starcon lifting unit and the Starcon lifting anchor is correct and secured against unintentional detachment.
- Keep a safe distance and never walk under a suspended load.
- Use gloves, safety shoes and other PPE when handling.
- Never use a Starcon lifting and handling system that has visible defects such as wear, deformations, rust damage, etc.
- Most anchors are designed to be easily handled during installation without the need for lifting equipment. However, some anchors may weigh more and should be handled using lifting equipment. Please refer to the order list for the accurate weight of each product.

## 12.1 Personal Protection

Always use gloves, a safety helmet, and safety shoes as a minimum requirement when operating the equipment. Keep hands and other body parts away from the lifting stand, lifting accessories, and the load during use.



## 12.2 Preparation of the product before use

### 12.2.1 Transport and Storage

Anchors should be transported and stored safely to prevent risks to personnel and nearby objects.

### 12.2.2 Unpacking

Remove the pallet and packaging protecting the anchors. Cut the safety straps. The person unpacking should wear gloves, safety shoes, and safety glasses when cutting the straps.

### 12.2.3 Safe Disposal of Packaging Materials

All packaging used by Certex Denmark can be reused. Pallets and all wooden packaging can be reused or recycled.

All plastic, cardboard, and paper materials should be sent to the local recycling center. If there are no local recycling facilities, the packaging should be returned to Certex Denmark for disposal at the customer's expense.

### 12.2.4 Preparatory Work Before Installation

After unpacking, visually inspect the anchors for any damage.

### 12.2.5 Installation and Assembly

The anchors are delivered ready for use.

### 12.2.6 Storage and Protection Between Periods of Normal Use

Inspect the anchors before each use and lift. Never use anchors or lifting accessories with visible defects such as wear, deformations, corrosion damage, etc. Always store the lifting bar indoors, in a dry and ventilated area.

### 12.2.7 Provision of Information (Users, Operators, Service Experts)

All operators or individuals within the danger zone must receive information on operating the anchors and must be trained by the supervisor, familiarizing themselves with the product and its use before lifting operations commence.

Operators must be trained in the use of the Starcon lifting equipment and all its functions and positioned to have a clear view of the entire lifting operation.

### 12.2.8 Placement of Instruction

All user manuals should always be stored together with the Starcon lifting equipment.

## 13 Maintenance and inspection

- All maintenance must be performed when the Starcon lifting unit is unloaded.
- The Starcon lifting unit should be inspected and maintained to ensure parts remains in proper condition during use.
- After each use, the Starcon lifting unit should be cleaned and inspected for any faults or deficiencies.
- If any faults are found, they must be rectified, or the Starcon lifting parts should be discarded.
- The Starcon lifting parts should always be stored in a dry and well-ventilated area.
- Any damaged, corroded, or worn-out Starcon lifting parts must be immediately taken out of service and marked not be used again.
- Equipment from Starcon should undergo at least one annual inspection by a qualified skilled person to inspect lifting equipment and cranes.

### 13.1 Maintenance Schedule



- Only original spare parts may be used, and they must be replaced by a trained individual.
- The annual inspection must be carried out by a skilled person who has received the necessary training and certification for lifting equipment.
- All services must be documented, and the data must be stored.
- If there are any visual defects or if the labeling is not present on the lifting stand, the lifting stand must be marked as "out of service".

- B** Before use
- A** After use
- M** Monthly, or a maximum of 200 hours of usage.
- Y** Annually, or after a maximum of 2400 hours of use.

Inspection	B	A	M	Y
Perform a visual inspection to check for signs of overload, deformation, damage, wear, and corrosion.	X	X	X	X
The equipment must undergo inspection.			X	
Ensure that the equipment is clear and legibly labeled.	X			X
Inspection should be carried out by a qualified individual with a report prepared.				X

Table 10 Maintenance schedule

## 14 Disposal / Recycling

This section describes the end of use for the product.

- End of use / Disposal The lifting points shall be sorted / scrapped as general steel scrap.
- The Starcon lifting and handling system should be sorted and disposed of according to appropriate material categories, including metal, plastic, etc.
- Certex can assist you with disposal if required.

## 15 Product data of Starcon lifting socket flat steel anchor

Figure 11 shows a measurement sketch for the lifting socket flat steel anchor with labels for the respective dimensions.

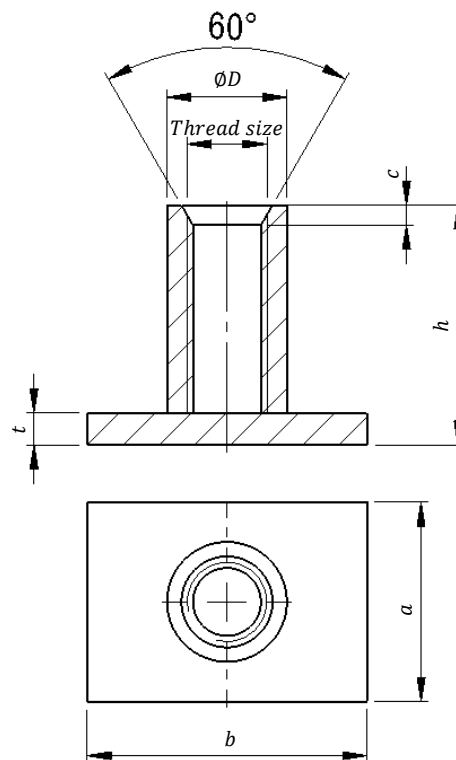


Figure 11 Lifting socket flat steel anchor sketch

### 15.1 Technical data

Table 11 shows the dimensions of the various types of lifting socket flat steel anchors.

Load group	Thread size	Dimensions mm					
		D	h	b	a	t	c
0.4S	M10x1.5	15	30	35	25	4	2.5
0.5S	M12x1.75	15	30	35	25	4	2.5
1.2S	M16x2.0	21	35	50	35	4	3.5
2S	M20x2.5	27.2	47	60	60	5	4.5
2.5S	M24x3.0	31	54	80	60	5	4.5
4S	M30x3.5	39.5	72	100	80	6	6

Table 11 Lifting socket flat steel anchor dimension.

## 16 Product data of lifting loop with thread

Figure 12 shows a measurement sketch for the lifting loop with thread.

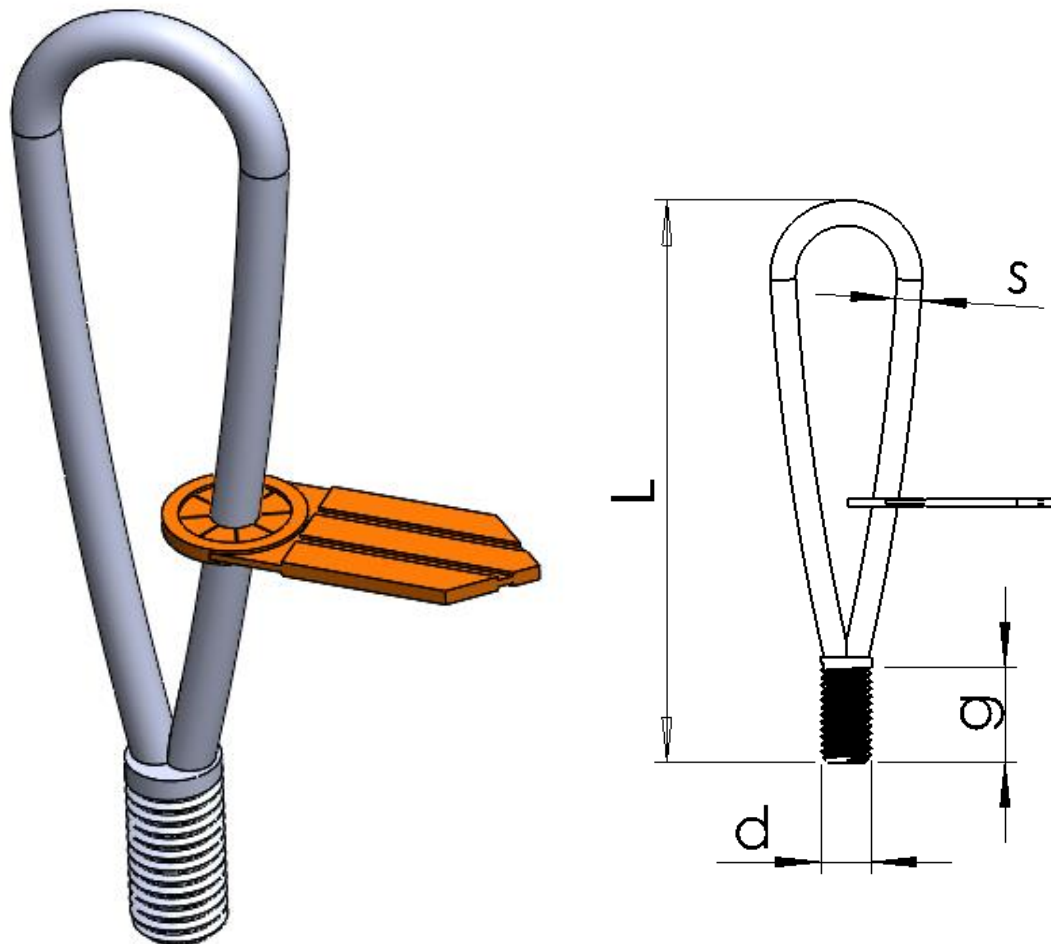


Figure 12 Lifting loop dimension sketch.

### 16.1 Technical data

Table 12 shows the dimensions of the various types of lifting loop.

Load group	Length of lifting loop L mm	Diameter of wire s mm	Thread d mm	Thread length g mm
0.5S	130	6	12	22
1.2S	170	8	16	27
2S	210	10	20	35
2.5S	260	12	24	43

Table 12 Lifting loop dimension.

## 17 Product data of Alpha inclined pull lifting loop

Figure 13 shows a measurement sketch for the pull lifting loop.

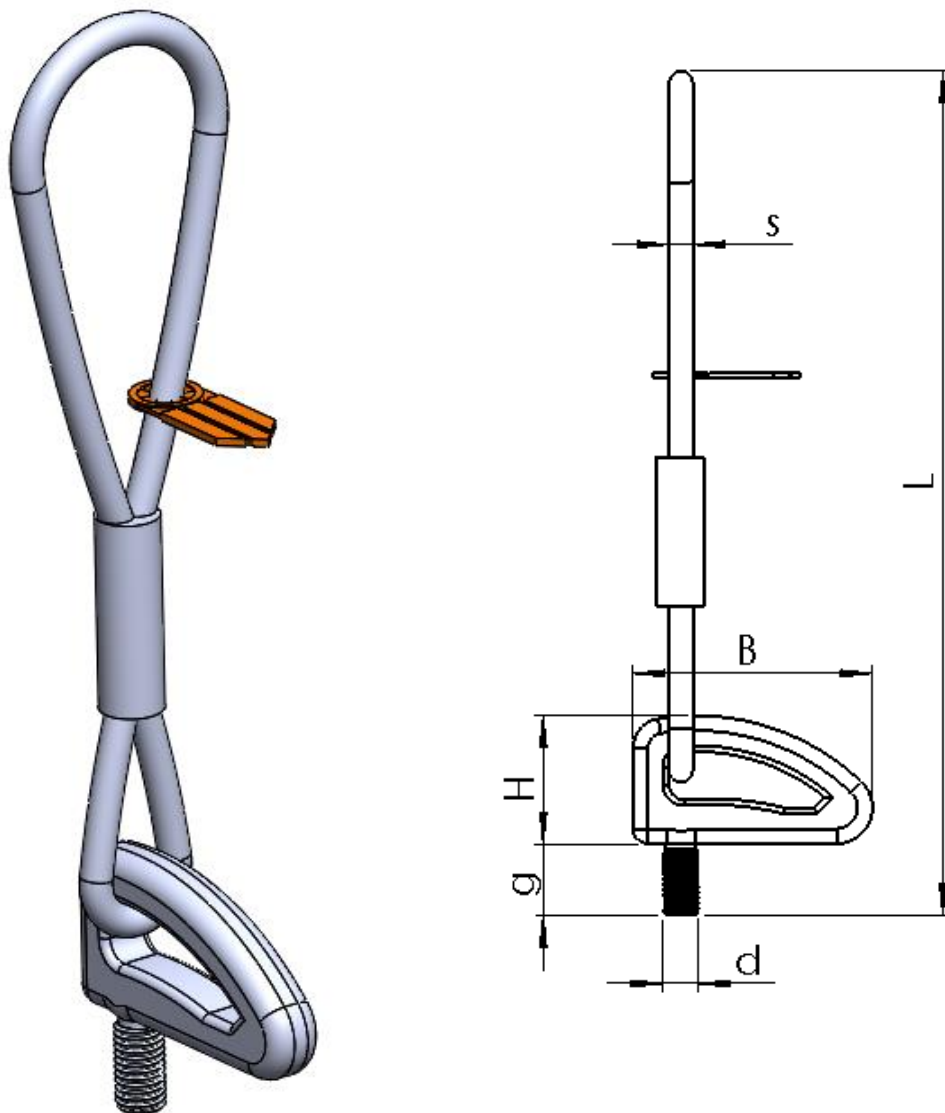


Figure 13 Pull lifting loop dimension sketch.

### 17.1 Technical data

Table 13 shows the dimensions of the various types of pull lifting loop.

Load group	Length of lifting loop L mm	Diameter of wire s mm	Ring width B mm	Ring height H mm	Thread d mm	Thread length g mm
0.5S	260	8	55	42	12	24
1.2S	320	10	55	42	16	28
2S	380	12	89	69	20	34
2.5S	430	14	89	69	24	39

Table 13 Pull lifting loop dimension.

## 18 Product data of Goliath lifting loop

Figure 14 shows a measurement sketch for the Goliath lifting loop.

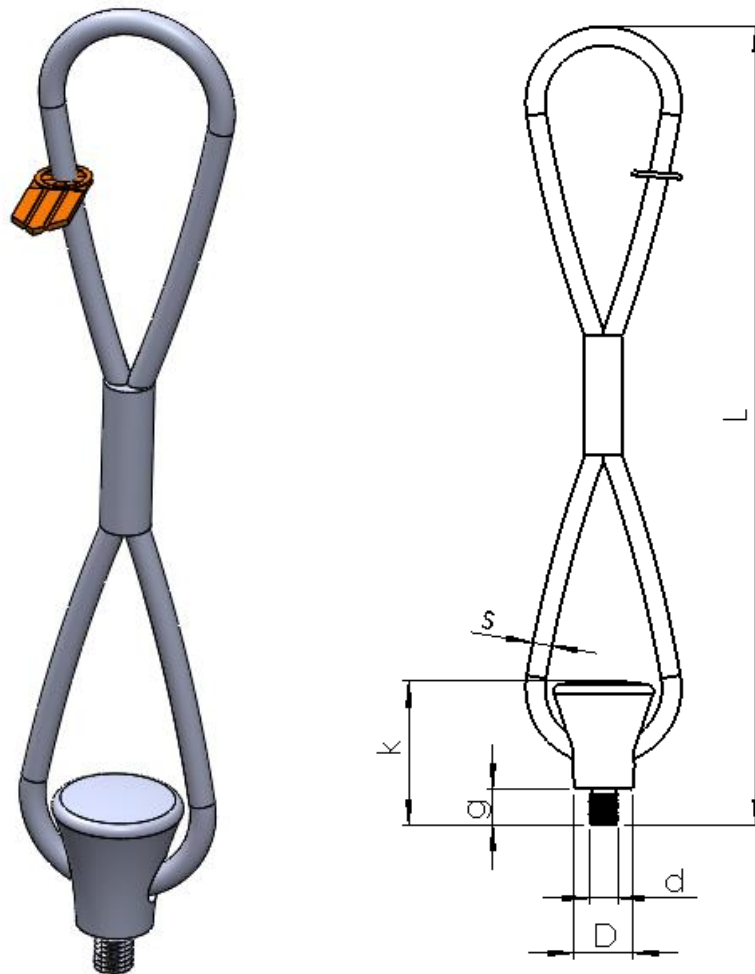


Figure 14 Goliath lifting loop dimension sketch.

### 18.1 Technical data

Table 14 shows the dimensions of the various types of Goliath lifting loop.

Load group	Length of lifting loop L mm	Diameter of wire s mm	Diameter of ring D mm	Ring height k mm	Thread d mm	Thread length g mm
0.5S	335	8	24	60	12	15
1.2S	365	9	24	60	16	20
2S	470	12	44	102	20	25
2.5S	550	14	44	102	24	30

Table 14 Goliath lifting loop dimension.

## 19 Product data of Nailing Plates 10mm thickness, plastic

Figure 15 shows a measurement sketch for the Nailing Plates 10mm thickness, plastic.

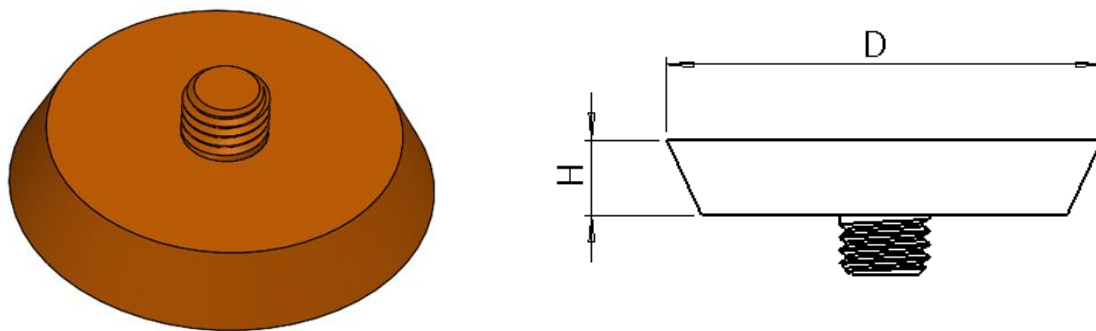


Figure 15 Nailing Plates 10mm thickness, plastic for anchors.

### 19.1 Technical data

Table 15 shows the dimensions of the various types of nailing plates used for casting the anchors.

Load group	D mm	H mm	Color
0.4S	58	10	Yellow
0.5S	58	10	Orange
1.2S	58	10	Red
2.0S	58	10	Light Green
2.5S	58	10	Black
4.0S	58	10	Dark Green

Table 15 Dimension of nailing plate for anchor.



## 20 EC – Declaration of Conformity of the Machinery

This certificate meets the requirements of the Directive 2006/42/EC Annex II.

Manufacturer and responsible for compiling the technical documentation:

Company:	<b>CERTEX Danmark A/S</b>	Tel. No.:	<b>+45 74 54 14 37</b>
Address:	<b>Trekanten 6-8</b>	E-mail:	<b>info@certex.dk</b>
	<b>6500 Vojens</b>		
	<b>Denmark</b>		

The undersigned hereby declares that the below specified tool comply with the current safety and health rules and legislation within the European Union. If any changes are made on the tool without approval from the manufacturer, this Declaration no longer applies.

**Description:** **Starcon Lifting socket flat steel anchor**

**Drawing No.:** **XXXXXXXXXXXXXXXX**

**Serial No.:** **XXXXXX**

**Lifting Capacity:** **WLL pr unit**

**Own Weight:** **Kg pr unit**

Is made in accordance with the following EC-directive;  
**2006/42/EC**

The following standards have been used:  
**EN 13155+A2 : 2009**

Date:

---

For CERTEX Danmark A/S

## Our industries, products & services

At CERTEX Denmark, we are a secure and reliable total supplier and partner within lifting equipment. Below is an overview of the industries we service, our product range, and the services we offer."



"

**Based on many years of experience  
& know-how within lifting, load  
tests & engineering, CERTEX  
Denmark is your reliable partner &  
supplier of steel wire, lifting  
applications & related services."**



**Lifting Solutions Group**  
Axel Johnson International

Nyvang 16, 2. tv  
DK-5500 Middelfart  
Tlf.: +45 74 54 14 37

Virkelyst 17b  
DK-9400 Nørresundby  
Tlf.: +45 98 13 18 88

Jernholmen 43-47D  
DK-2650 Hvidovre  
Tlf.: +45 36 77 40 30

Olievej 4  
DK-6700 Esbjerg  
Tlf.: +45 75 13 08 44

CERTEX Danmark A/S  
Trekanten 6-8  
DK-6500 Vojens  
Tlf.: +45 74 54 14 37  
E-mail: [info@certex.dk](mailto:info@certex.dk)  
[www.certex.dk](http://www.certex.dk)