

Flat Cable Towing Trolley

Product information

This trolley is pulled along by means of a towing arm fitted to the travelling device and inserted into the stirrup section of the trolley. It cannot be used on curved tracks.

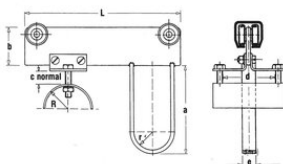
... [Read more](#)



Note: If the thickness of cables is larger than "C" normal, then when the trolley comes close together the cables collide and might wear. In this case use a bigger "NIKO" series or ask us for spec

Flat Cable Towing Trolley

Blueprint



Technical data

Part code	For cable mm	Profile No.
600521M10	55x20	2100/21010
600524M10	55x40	24,000
600524M11	100x40	24,000
600525M10	150x50	25,000