

Aluminium Gantry Crane foldable

Product information



Our range of lightweight portable gantries brings a new dimension to the professional lifting market. The portability, safe manual assembly and rigidity of the structure mean that it opens up a whole new market for the use of gantries with lifting applications such as confined space, rooftop, HVAC, lift-shaft, waste water, clean environments (food, hospitals etc.) and increasing availability from the hire industry.

Design: The gantry crane consists of four individual elements that can be assembled and disassembled in a few minutes. The height is adjustable so that the crane can also be placed in rooms with low ceilings.

Areas of applications:

- Moving and lifting of heavy loads.
- Building motors and driving applications in and out.
- Repair and maintenance of pumps.
- Loading trucks and trailers on and off.
- For use in workshops and on site.

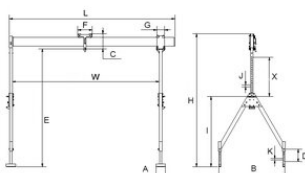
... [Read more](#)

Note: Can be delivered with capacity up to 3 tons, as well as custom-made solutions.

The gantry crane is delivered with a trolley, the hoist is purchased separately!

Aluminium Gantry Crane foldable

Blueprint



Technical data

Part code	WLL ton	Model	Beam length m	A mm	B mm	C mm	D, mm	E mm	F mm	G, mm	H, mm	Imm mm	J mm	K mm	L mm	Wmm mm	X mm	Weight kg
60051110007	0.75	Mini	7	240	1,200	385	320	1230-2100	350	200	1615-2485	1020-1340	50	40	7,217	6,992	550	143
60051110008	0.75	Mini	8	240	1,200	385	320	1230-2100	350	200	1615-2485	1020-1340	50	40	8,217	7,992	550	153
60051120007	0.75	Standard	7	240	1,720	385	320	1680-3000	350	200	2065-3385	1470-1790	50	40	7,217	6,992	1,000	159
60051120008	0.75	Standard	8	240	1,720	385	320	1680-3000	350	200	2065-3385	1470-1790	50	40	8,217	7,992	1,000	168
60051130007	0.75	Maxi	7	240	2,295	385	320	2180-4000	350	200	2565-4385	1965-2285	50	40	7,217	6,992	1,500	175
60051130008	0.75	Maxi	8	240	2,295	385	320	2180-4000	350	200	2565-4385	1965-2285	50	40	8,217	7,992	1,500	184
60051110006	1	Mini	6	240	1,200	385	320	1230-2100	350	200	1615-2485	1020-1340	50	40	6,217	5,992	550	134
60051120006	1	Standard	6	240	1,720	385	320	1680-3000	350	200	2065-3385	1470-1790	50	40	6,217	5,992	1,000	149
60051130006	1	Maxi	6	240	2,295	385	320	2180-4000	350	200	2565-4385	1965-2285	50	40	6,217	5,992	1,500	165
60051110002	1.5	Mini	2	240	1,200	385	320	1230-2100	350	200	1615-2485	1020-1340	50	40	2,217	1,992	550	96
60051110003	1.5	Mini	3	240	1,200	385	320	1230-2100	350	200	1615-2485	1020-1340	50	40	3,217	2,992	550	105
60051120002	1.5	Standard	2	240	1,720	385	320	1680-3000	350	200	2065-3385	1470-1790	50	40	2,217	1,992	1,000	111
60051110004	1.5	Mini	4	240	1,200	385	320	1230-2100	350	200	1615-2485	1020-1340	50	40	4,217	3,992	550	115
60051120003	1.5	Standard	3	240	1,720	385	320	1680-3000	350	200	2065-3385	1470-1790	50	40	3,217	2,992	1,000	121

Aluminium Gantry Crane foldable

Technical data

Part code	WLL ton	Model	Beam length m	A mm	B mm	C mm	D, mm	E mm	F mm	G, mm	H, mm	I mm mm	J mm	K mm	L mm	W mm mm	X mm mm	Weight kg
60051110005	1.5	Mini	5	240	1,200	385	320	1230-2100	350	200	1615-2485	1020-1340	50	40	5,217	4,992	550	124
60051130002	1.5	Maxi	2	240	2,295	385	320	2180-4000	350	200	2565-4385	1965-2285	50	40	2,217	1,992	1,500	127
60051120004	1.5	Standard	4	240	1,720	385	320	1680-3000	350	200	2065-3385	1470-1790	50	40	4,217	3,992	1,000	130
60051130003	1.5	Maxi	3	240	2,295	385	320	2180-4000	350	200	2565-4385	1965-2285	50	40	3,217	2,992	1,500	137
60051120005	1.5	Standard	5	240	1,720	385	320	1680-3000	350	200	2065-3385	1470-1790	50	40	5,217	4,992	1,000	140
60051130004	1.5	Maxi	4	240	2,295	385	320	2180-4000	350	200	2565-4385	1965-2285	50	40	4,217	3,992	1,500	146
60051130005	1.5	Maxi	5	240	2,295	385	320	2180-4000	350	200	2565-4385	1965-2285	50	40	5,217	4,992	1,500	156