

## Eye Spherical Anchor Starcon

### Product information



The Starcon eye anchor is a steel component with a specially designed end that ensures solid anchoring in hardened concrete. Its cylindrical head connects seamlessly with a Starcon lifting eye for efficient lifting. The eye anchor is used in specific applications where the element has a thinner width, reducing the load capacity, and where a spherical anchor cannot be used.

This is compensated by placing a reinforcing rod through the eye to increase the load-bearing capacity of the anchor foot in the concrete. The eye anchor is particularly suitable for slender reinforced concrete elements such as thin elements and beams as well as lightweight concrete elements. It should always be used with rebar, which is mounted at the end where the eye is and should never be used without.

**Areas of application:** Thin elements, columns and beams

**Advantages:** Ideal for slim concrete elements.

Quick connection/disconnection with shapes and lifting eyes, perfect for efficient transport and setup.

**Load group:** 1.3t – 20t

**Technical data:** CE marking according to MD 2006/42 EF Starcon product is designed according to EN13155-2009 and follows the guidelines of VDI/BV-BS 6205 and DS/CEN/TR 15728.

**EPD:** Our Environmental Product Declarations (EPDs) are available in the LCA NO calculator/software. These EPDs have been prepared in strict accordance with ISO 14025 and EN 15804 standards.

**Download the EPDs from the LCA database:**

Untreated Products: [Starcon Lifting and Handling Systems for Concrete elements - Untreated - EPD Norge](#)

Surface treated Products: [Starcon Lifting and Handling Systems for Concrete elements - Surface Treated. - EPD Norge](#)

... [Read more](#)

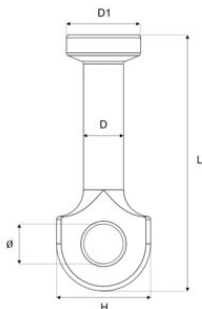
**Marking:** CE-marked, batch code, load group + S(Starcon)

**Finish:** Untreated - Corrosion class C1 - ISO 12944-2. Hot-dip galvanized - Corrosion class C3 - ISO 12944-2

**Note:** The delivery time for the individual products is estimated and if the desired quantity is not in stock, please contact [CERTEX Danmark A/S – Starcon](#) to get information about the applicable delivery time.

## Eye Spherical Anchor Starcon

### Blueprint



### Technical data

Part code	Load grp. t	Packing Qty.	Length mm	Finish	D mm	D1 mm	H, mm	L mm	Ø mm mm	Weight kg
65011301300651	1.3	250	65	Untreated	10	19	22	65	10	0.06
65011301300652	1.3	250	65	Hot dip galvanized	10	19	22	65	10	0.06
65011302500901	2.5	100	90	Untreated	14	26	32	90	14	0.17
65011302500902	2.5	100	90	Hot dip galvanized	14	26	32	90	14	0.17
65011305001201	5	35	120	Untreated	20	36	43	120	20	0.43
65011305001202	5	35	120	Hot dip galvanized	20	36	43	120	20	0.43
65011310001151	10	25	115	Untreated	28	46	57	115	25	0.77
65011310001801	10	15	180	Untreated	28	46	57	180	25	1.16
65011310001802	10	15	180	Hot dip galvanized	28	46	57	180	25	1.16
65011320002501	20	4	250	Untreated	39	70	83	250	38	3.17
65011320002502	20	4	250	Hot dip galvanized	39	70	83	250	38	3.17