

Lifting Beam Type K

Product information



CERTEX

This type of lifting beam is characterized by adjustable attachments via a cam beam and it is designed for direct attachment to the crane hook in the central lifting eye. The attachment points are designed as oval rings, which makes it possible to use for example a 2-part sling. Other lengths and working loads can be manufactured upon request.

Design: Lightweight welded pipe beam construction providing good torsional stiffness.

Proof load: Usually 1,5 x WLL.

[... Read more](#)

Material: Hollow beam and plate manufactured with high-strength structural steel.

Marking: Working load limit (WLL), CE marking, manufacturer, serial number, year of manufacturing, etc.

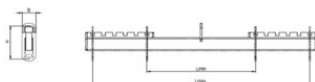
Finish: Yellow painted. Other treatments available on request.

Note: Top sling, separate slings and other accessories to be ordered separately.

Safety factor: 1,5 x WLL

Lifting Beam Type K

Blueprint



Technical data

Part code	Code	WLL ton	B mm	H mm	L min. mm	L max. mm	Weight kg
6205620051500	K-0,5/1,5	0.5	95	250	750	1,500	28
6205620052000	K-0,5/2	0.5	95	250	800	2,000	34
6205620052500	K-0,5/2,5	0.5	95	250	1,300	2,500	38
6205620053000	K-0,5/3	0.5	95	250	1,350	3,000	58
6205620053500	K-0,5/3,5	0.5	120	280	1,850	3,500	72
6205620054000	K-0,5/4	0.5	120	280	1,900	4,000	81
6205620055000	K-0,5/5	0.5	120	280	2,450	5,000	139
6205620056000	K-0,5/6	0.5	140	330	3,000	6,000	172
6205620101500	K-1/1,5	1	120	280	750	1,500	32
6205620102000	K-1/2	1	120	280	800	2,000	48
6205620102500	K-1/2,5	1	120	280	1,300	2,500	56
6205620103000	K-1/3	1	120	280	1,350	3,000	65
6205620103500	K-1/3,5	1	120	280	1,850	3,500	101
6205620104000	K-1/4	1	140	330	1,900	4,000	146
6205620106000	K-1/6	1	156	415	3,000	6,000	169
6205620105000	K-1/5	1	140	330	2,450	5,000	177
6205620201500	K-2/1,5	2	140	330	750	1,500	48
6205620202000	K-2/2	2	140	330	800	2,000	56
6205620202500	K-2/2,5	2	140	330	1,300	2,500	74
6205620203000	K-2/3	2	140	330	1,350	3,000	98
6205620203500	K-2/3,5	2	140	330	1,850	3,500	132
6205620204000	K-2/4	2	156	415	1,900	4,000	135

Lifting Beam Type K

Technical data

Part code	Code	WLL ton	B mm	H mm	L min. mm	L max. mm	Weight kg
6205620205000	K-2/5	2	156	415	2,450	5,000	207
6205620206000	K-2/6	2	156	415	3,000	6,000	253
6205620301500	K-3/1,5	3	145	417	600	3,000	58
6205620302000	K-3/2	3	156	415	800	2,000	74
6205620303000	K-3/3	3	156	415	1,350	3,000	115
6205620304000	K-3/4	3	156	415	1,900	4,000	174
6205620305000	K-3/5	3	106	455	2,450	5,000	246
6205620306000	K-3/6	3	250	595	3,000	6,000	408
6205620502000	K-5/2	5	106	455	800	2,000	106
6205620503000	K-5/3	5	106	455	1,350	3,000	165
6205620504000	K-5/4	5	106	455	1,900	4,000	245
6205620505000	K-5/5	5	250	595	2,450	5,000	258
6205620506000	K-5/6	5	250	595	3,000	6,000	409
6205620802000	K-8/2	8	106	455	800	2,000	123
6205620803000	K-8/3	8	250	595	1,350	3,000	250
6205620804000	K-8/4	8	250	595	1,900	4,000	352
6205620805000	K-8/5	8	250	595	2,450	5,000	495
6205620806000	K-8/6	8	280	760	3,000	6,000	600
6205621002000	K-10/2	10	250	595	800	2,000	266
6205621003000	K-10/3	10	250	595	1,350	3,000	330
6205621004000	K-10/4	10	250	595	1,900	4,000	383
6205621005000	K-10/5	10	280	760	2,450	5,000	522
6205621006000	K-10/6	10	280	760	3,000	6,000	704
6205621604000	K-16/4	16	280	760	1,900	4,000	517
6205621605000	K-16/5	16	330	825	2,450	5,000	741