

Electric Winches type A

Product information

EMCÉ

WINCHES

A comprehensive range of standard winches with a high efficiency performance gearbox developed for heavy duty pulling and lifting duties of up to 2.700 kg. This broad range comprises a variation of very compact winches and each type is standard available with a choice of 3 different speeds. Drum lengths can easily be adapted to customer requirements.

Features:

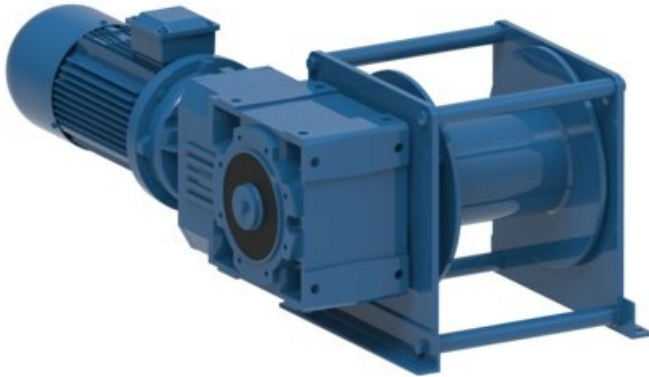
- High efficiency transmission
- IP 54 400 V AC / 3-phases / 50 Hz braked motor
- Steel drum (not grooved) with cable fixing point at flange
- Two drum supports (all other models)
- Double layer 2-component conservation according ISO 12944 category C2-Low, colour RAL 5010
- FEM / ISO class: T3-L3-M4

Available options:

- IP 56 TENV cast iron motor for marine applications
- 230 VAC single-phase motors (up to 1.8 kW)
- 24 V DC motors
- Hydraulic motors
- Explosion-proof motors
- Manual or remotely controlled disengaging clutch
- Protective steel motor cover
- Band brakes
- Grooved drum
- Motor position vertically up
- Drum pressure roller
- Alternative speeds
- Alternative drum dimensions / split drums / additional rope anchors / etc.
- Drum guards
- Marine / offshore coating systems

Available control options

- Control box IP 55 with push-buttons and emergency stop built acc. to NEN 1010
- Control box IP 66 with low voltage IP 65 remote control built acc. to NEN 1010
- Load limiter
- Frequency inverter for variable speed control
- Wireless radio remote control systems



- Limit switches
- Slack wire switches

Part code	WLL ton	Type	WLL top layer ton	Recomm. rope dia. mm	Speed top layer m/min	Motor kW	Speed 1st layer m/min	Drum capacity 1st layer m	Max. drum capacity m	Delivery time
5406	0.5	A20L	0.345	6	4.5	0.37	3	7	48	10
5406	0.5	A20M	0.345	6	12.5	0.75	8.5	7	48	10
5406	0.5	A20H	0.345	6	23	1.5	16	7	48	10
5406	0.5	A20 SP220	0.345	6	12.5	1.1	8.5	7	48	10
5406	0.6	A30L	0.4	8	4.5	0.37	3	6	44	10
5406	0.65	A30M	0.435	8	13	1.1	8.5	6	44	10
5406	0.65	A30H	0.435	8	19.5	1.5	13	6	44	10
5406	0.9	A35L	0.6	8	6	0.75	4	6	44	10
5406	0.9	A35M	0.6	8	13	1.5	8.5	6	44	10
5406	0.9	A35H	0.6	8	18	2.2	12	6	44	10
5406	1	A41 SP220	0.685	9	8.5	1.5	6	10	62	10
5406	1.2	A41L	0.82	9	7	1.1	4.5	10	62	10
5406	1.2	A41M	0.82	9	8.5	1.5	6	10	62	10
5406	1.2	A41H	0.82	9	19	3	13	10	62	10
5406	1.8	A50L	1.205	11	7	1.5	4.5	10	74	10
5406	1.8	A50M	1.205	11	10	2.2	7	10	74	10
5406	1.8	A50H	1.205	11	19	4	12.5	10	74	10
5406	2.2	A55L	1.46	12	8	2.2	5	10	72	10
5406	2.2	A55M	1.46	12	10	3	7	10	72	10
5406	2.2	A55H	1.46	12	20	5.5	13	10	72	10
5406	2.7	A60L	1.8	14	7	2.2	4.5	17	117	10
5406	2.7	A60M	1.8	14	12	4	8	17	117	10
5406	2.7	A60H	1.8	14	21	7.5	14	17	117	10