

Connecting Link POWERTEX C

Product information



The POWERTEX Connecting Link C is part of the Powertex G10 Lifting Sling Chain Components range. It's a quick and cost-effective part for assembling chain slings. The locking spring is encapsulated in a protective steel bushing.

Available for 6 mm up to 32 mm chain, and from WLL 1.4t up to WLL 40t.

Powerdex G10 Range benefits:

- 25% higher capacity compared to traditional Grade 8 components
- All POWERTEX G10 components are powder painted in luminous red
- Multi-functional master links and components are included in the range to allow quick and cost-effective assembly of chain slings
- The components meet EN 1677 part 1/2/3/4 +25% WLL
- Each forged component is crack detection tested, and samples are proof load tested.
- Each component is type tested in the factory and fatigue rated to 20,000 cycles at 1.5 times the WLL
- Full traceability through a batch number
- Replacement spare parts available
- All components are chromium 6 free
- POWERTEX 2.2 certificate enclosed with each box of components
- The components may also be used with Grade 8 chain to EN 818-2. In such a case, the chain sling needs to be rated as Grade 8 in accordance with EN 818-2 ... [Read more](#)

Marking: According to standard, POWERTEX + Model (C-6-10) + traceability code.

Temperature range: -40°C up to +200°C without reduction in WLL

Finish: Powder painted in luminous red

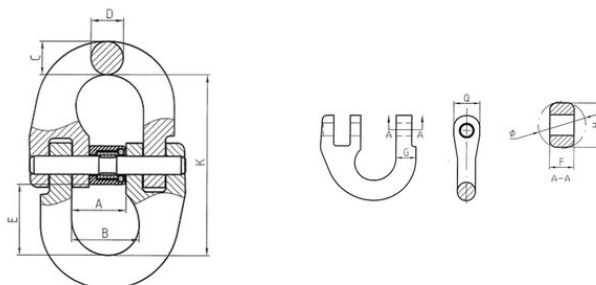
Standard: EN 1677-1 (+ 25% WLL), AS 3776

Safety factor: 4:1

Grade: 10

Connecting Link POWERTEX C

Blueprint



Technical data

| Part code | Code | Chain diameter mm | WLL ton | EWL mm | A mm | B mm | C mm | D mm | E mm | F mm | G mm | H mm | K mm | Q mm | Ø mm mm | Weight kg |
|--------------|---------|----------------------|------------|-----------|------|------|------|------|------|------|------|------|-------|------|---------|--------------|
| 402200140310 | C-6-10 | 6 | 1.4 | 44.5 | 14 | 16.9 | 8.5 | 7 | 16 | 5.5 | 7.4 | 11 | 44.5 | 12 | 11.4 | 0.08 |
| 402200250310 | C-8-10 | 8 | 2.5 | 63 | 18.5 | 22.7 | 10.5 | 10 | 24 | 7.8 | 10.2 | 14 | 63 | 14 | 15 | 0.18 |
| 402200400310 | C-10-10 | 10 | 4 | 71 | 23 | 27.7 | 12.6 | 12.6 | 28 | 9.6 | 12.6 | 18 | 71 | 18 | 19 | 0.34 |
| 402200670310 | C-13-10 | 13 | 6.7 | 92.5 | 28 | 33.2 | 16.5 | 16.5 | 34 | 12.5 | 17 | 23 | 92.5 | 23 | 24.5 | 0.68 |
| 402201000310 | C-16-10 | 16 | 10 | 106.5 | 33.5 | 39 | 20 | 20 | 39 | 16.2 | 20 | 29.5 | 106.5 | 29.5 | 31 | 1.22 |
| 402201600310 | C-20-10 | 20 | 16 | 123 | 42 | 47.3 | 25 | 25 | 42 | 18 | 25 | 35.5 | 123 | 35.5 | 38 | 2.13 |
| 402201900310 | C-22-10 | 22 | 19 | 137.5 | 48 | 55 | 27 | 27 | 50 | 21 | 27 | 39 | 137.5 | 39 | 41 | 3 |
| 402202650310 | C-26-10 | 26 | 26.5 | 163 | 61 | 68 | 32 | 32 | 63 | 25 | 32 | 45 | 163 | 45 | 49 | 5.22 |
| 402204000310 | C-32-10 | 32 | 40 | 197 | 80 | 87 | 40 | 40 | 78 | 33 | 38.5 | 54 | 197 | 54 | 61 | 9.55 |