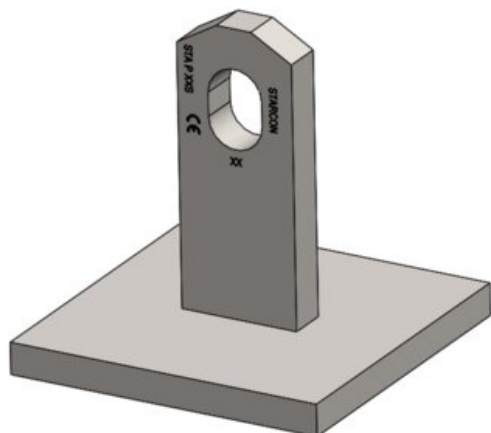


STA-P Plate Anchor Starcon



Product information

The Starcon STA-P plate anchor is ideal for thin prefabricated elements with large surfaces. The hole in the top is intended for mounting the ring coupling. If necessary, the reinforcement can be placed on the top side of the plate/anchor foot to ensure a stable installation.

Areas of application: Thin slab elements and thin balconies.

Advantages: Thin elements.

Easy placement of reinforcement on top of the plate.

Quick connection/disconnection with shapes and Starcon ring coupling, perfect for efficient transport and setup.

Load group: 2.5t – 10t

Technical information: CE marking according to MD 2006/42 EF

Starcon product is designed according to EN13155-2009 and follows the guidelines of VDI/BV-BS 6205 and DS/CEN/TR 15728.

EPD: Our Environmental Product Declarations (EPDs) are available in the LCA NO calculator/software. These EPDs have been prepared in strict accordance with ISO 14025 and EN 15804 standards.

Download the EPDs from the LCA database:

Untreated Products: [Starcon Lifting and Handling Systems for Concrete elements - Untreated - EPD Norge](#)

Surface treated Products: [Starcon Lifting and Handling Systems for Concrete elements - Surface Treated. - EPD Norge](#)

Marking: CE-marked, batch code, load group + S(Starcon)

Finish: Untreated - Corrosion class C1 - ISO 12944-2

Safety factor: 3:1

Note: The delivery time for the individual products is estimated and if the desired quantity is not in stock, please contact [CERTEX Denmark A/S – Starcon](#) for information on the applicable delivery time.

Part code	Load grp. t	Length mm	Finish	a mm	c mm	e mm	f mm	L	r mm	Weight kg	Packing Qty.	Delivery time
65012102500801	2.5	80	Untreated	30	10	80	8	80	14x20	0.54	25	10
65012105001201	5	120	Untreated	40	15	100	10	120	20x22	1.3	12	2
65012110001601	10	160	Untreated	60	20	140	12	160	28x30	3.23	1	2

Blueprint

