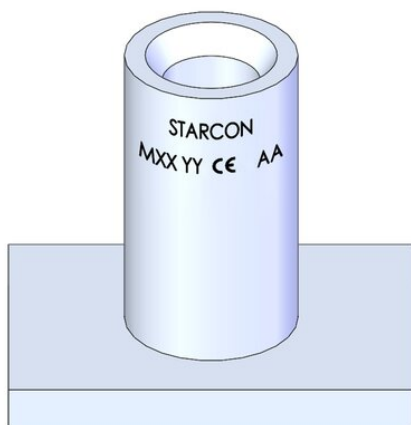


Lifting Socket Flat steel Anchor Starcon

Product information



The Starcon lifting socket flat steel anchor is distinguished by its large footplate and low installation height, which makes it particularly suitable for embedding in concrete slabs and concrete elements of limited thickness. The anchor has a specially designed base with a large contact area.

Additional reinforcement can be mounted on the top of the foot when needed. The head of the welded-on flat steel anchor is cylindrical with internal thread and is available in both metric and round threads. This makes it easy to attach wire rope straps and threaded lifting equipment by screwing these onto the transport anchor.

Areas of application: Floor, plate and slab elements.

Advantages: Elements with a low installation height.

Easy placement of reinforcement on top of the plate/foot.

Low dead weight.

Load group: 0.4t – 4t

Technical information: CE marking according to MD 2006/42 EF

Starcon product is designed according to EN13155-2009 and follows the guidelines of VDI/BV-BS 6205 and DS/CEN/TR 15728.

EPD: Our Environmental Product Declarations (EPDs) are available in the LCA NO calculator/software. These EPDs have been prepared in strict accordance with ISO 14025 and EN 15804 standards.

Download the EPDs from the LCA database:

Surface treated products: [Starcon Lifting and Handling Systems for Concrete elements - Surface Treated. - EPD Norge](#)

... [Read more](#)

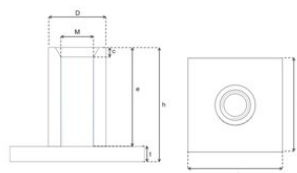
Marking: CE-marked, Thread size, batch code, load group

Finish: Electro-galvanized - Corrosion class C3 - ISO 12944-2.

Note: The delivery time for the individual products is estimated and if the desired quantity is not in stock, please contact [CERTEX Danmark A/S – Starcon](#) to get information about the applicable delivery time.

Lifting Socket Flat steel Anchor Starcon

Blueprint



Technical data

Part code	Thread mm	Load grp. t	Length mm	Finish	D mm	h mm	b mm	a mm	t mm	c mm	e mm	M mm	Weight kg	Packing Qty.
650575NK3510ZN	M10	0.4t	30	White zinc plated	15	30	35	25	4	2.5	26	M10	0.04	-
650575NK3512VA	M12	0.5t	30	Stainless	15	30	35	25	4	2.5	26	M12	0.065	200
650575NK3512ZN	M12	0.5t	30	White zinc plated	15	30	35	25	4	2.5	26	M12	0.065	200
650575NK3516VA	M16	1.2t	35	Stainless	21	35	50	35	4	3.5	31	M16	0.1	150
650575NK3516ZN	M16	1.2t	35	White zinc plated	21	35	50	35	4	3.5	31	M16	0.1	150
650575NK3520VA	M20	2t	47	Stainless	27.2	47	60	60	5	4.5	42	M20	0.25	50
650575NK3520ZN	M20	2t	47	White zinc plated	27.2	47	60	60	5	4.5	42	M20	0.25	50
650575NK3524VA	M24	2.5t	54	Stainless	31	54	80	60	5	4.5	49	M24	0.33	40
650575NK3524ZN	M24	2.5t	54	White zinc plated	31	54	80	60	5	4.5	49	M24	0.33	40
650575NK3530VA	M30	4t	72	Stainless	39.5	72	100	80	6	6	66	M30	0.71	20
650575NK3530ZN	M30	4t	72	White zinc plated	39.5	72	100	80	6	6	66	M30	0.753	20