

Stainless Lifting Eye Nut DIN 582

Product information



Lifting eye nut for common purposes.

Only approved for lifting as an integrated part of a machine (Machine Directive). For other purposes, the next size WLL must be used.

User information

Eyebolts/eyenuts to this standard are intended as permanent attachments on equipment such as motors, control cabinets, gear boxes, etc.

The values given for eyebolts/eyenuts used with double-strand slings (cf. table line 2) apply only if the angle between each sling branch and the vertical does not exceed 45°. Larger angles and any lateral loading of eyebolts/eyenuts should be avoided.

... [Read more](#)

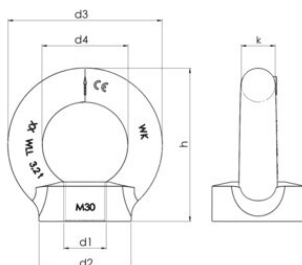
Material: AISI 316

Marking: According to standard

Standard: DIN 582

Stainless Lifting Eye Nut DIN 582

Blueprint



Technical data

Part code	WLL ton	Thread	d1 mm	d2 mm	d3 mm	d4 mm	h mm	k mm	Weight kg/100pc
421100010130	0.14	M8	M8	20	36	20	36	8	5
421100020130	0.23	M10	M10	25	45	25	45	10	9
421100030130	0.34	M12	M12	30	54	30	53	12	16
421100070130	0.7	M16	M16	35	63	35	62	14	24
421100120130	1.2	M20	M20	40	72	40	71	16	36
421100180130	1.8	M24	M24	50	90	50	90	20	72