

## Stainless Lifting Eye Bolt DIN 580

---

### Product information



Ring screw for common purposes.

Only approved for lifting as an integrated part of a machine (Machine Directive). For other purposes, the next size WLL must be used.

### User information

Eyebolts/eyenuts to this standard are intended as permanent attachments on equipment such as motors, control cabinets, gear boxes, etc.

The values given for eyebolts/eyenuts used with double-strand slings (cf. table line 2) apply only if the angle between each sling branch and the vertical does not exceed 45°. Larger angles and any lateral loading of eyebolts/eyenuts should be avoided.

... [Read more](#)

---

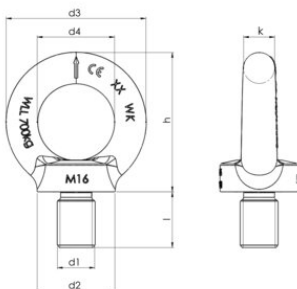
**Material:** AISI 316

**Marking:** According to standard, CE-marked

**Standard:** DIN 580

## Stainless Lifting Eye Bolt DIN 580

### Blueprint



### Technical data

Part code	WLL ton	Thread mm	d1 mm	d2 mm	d3 mm	d4 mm	h mm	l mm	k mm	Weight kg/100pc
421100010092	0.07	M6	M6	20	36	20	36	13	8	6
421100010090	0.14	M8	M8	20	36	20	36	13	8	6
421100020090	0.23	M10	M10	25	45	25	45	17	10	11
421100030090	0.34	M12	M12	30	54	30	53	20	12	18
421100070090	0.7	M16	M16	35	63	35	62	27	14	28
421100120090	1.2	M20	M20	40	72	40	71	30	16	45
421100180090	1.8	M24	M24	50	90	50	90	36	20	74