

## Lifting Eye Bolt DIN 580

### Product information



**Material:** Steel C15E.

**Marking:** According to standard, CE-marked, WLL, manufacturer C15, thread.

**Finish:** Electro galvanized.

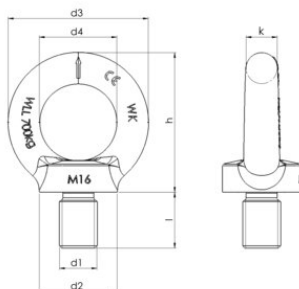
**Standard:** DIN 580

**Note:** The lifting eyes shall be screwed tight against the surface. When two lifting eyes are used their mutual position shall result in the two eyes at the same level. Larger angle between the slings than 90° are not tolerated. Lifting eyes can not be assembled against a surface that differs essentially from a surface perpendicular to the direction of the lift.

**Safety factor:** 6:1

## Lifting Eye Bolt DIN 580

### Blueprint



### Technical data

Part code	WLL ton	Thread	d1 mm mm	d2 mm mm	d3 mm mm	d4 mm mm	h mm mm	k mm mm	l mm mm	Weight kg/100pc
421100320080	3.2	M30	M30	65	108	60	109	24	45	166
421100320085	3.2	M33	M33	75	126	70	128	28	54	260
421100630080	6.3	M42	M42	85	144	80	147	32	63	403

Thread



WLL (ton)

M8	0.14	0.095
M10	0.23	0.17
M12	0.34	0.24
M16	0.7	0.5
M20	1.2	0.83
M24	1.8	1.27
M30	3.2	2.6
M36	4.6	3.7
M42	6.3	5
M48	8.6	6.1