

## Eyebolt

---

### Product information



For a maximum angle of use  $90^\circ$  between the two legs - divide the WLL by two.  
Stated WLL is at  $0^\circ$ .

... [Read more](#)

---

**Material:** Alloy steel.

**Marking:** According to standard, CE-marked, WLL, sizes, steel quality, productname, traceable.

**Finish:** Red painted.

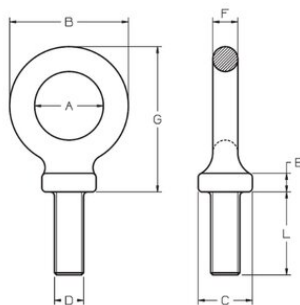
**Standard:** ISO 3266

**Note:** Approved for lifting.

**Safety factor:** 4:1.

# Eyebolt

## Blueprint



## Technical data

| Part code    | WLL ton | Thread | Tightening torque Nm | A mm | B mm | C mm | D mm | E mm | F mm | G mm | L mm | Weight kg |
|--------------|---------|--------|----------------------|------|------|------|------|------|------|------|------|-----------|
| 421100040030 | 0.4     | M8     | 8                    | 19.5 | 35.5 | 20   | 8    | 6    | 8    | 44   | 24   | 0.06      |
| 421100070030 | 0.7     | M10    | 16                   | 23   | 43   | 21   | 10   | 7    | 10   | 51   | 28   | 0.08      |
| 421100100030 | 1       | M12    | 28                   | 29   | 53   | 22   | 12   | 8    | 12   | 64   | 40   | 0.14      |
| 421100120030 | 1.2     | M14    | 54                   | 31.5 | 59.5 | 26   | 14   | 9    | 14   | 72   | 40   | 0.2       |
| 421100150030 | 1.5     | M16    | 70                   | 36   | 64   | 38   | 16   | 10   | 14   | 79   | 51   | 0.3       |
| 421100250030 | 2.5     | M20    | 135                  | 45.5 | 77.5 | 32   | 20   | 12   | 18   | 95   | 56   | 0.5       |
| 421100400030 | 4       | M24    | 230                  | 53   | 94   | 38   | 24   | 12   | 20.5 | 110  | 67   | 0.92      |

## Eyebolt

|        | <input type="checkbox"/> | <input type="checkbox"/> |
|--------|--------------------------|--------------------------|
|        | 1                        | 2                        |
|        | 0°                       | 0°                       |
| Size   | Single-leg               | 2-legs                   |
| M8X24  | 0,4                      | 0,8                      |
| M10X28 | 0,7                      | 1,4                      |
| M12X40 | 1,0                      | 2,0                      |
| M14X40 | 1,2                      | 2,4                      |
| M16X51 | 1,5                      | 3,0                      |
| M20X56 | 2,5                      | 5,0                      |
| M24X67 | 4,0                      | 8,0                      |