

## Thread Terminals Metric - TTM

---

### Product information

TTM (Thread Terminals Metric) are stainless steel threaded terminals for pressing or swaging onto stainless steel wire rope. They are used to put tension on a wire, either with the help of nuts and washers or as part of a rigging screw.

#### Features:

- Wide range of sizes
- Available in right hand and left hand threads.
- Other sizes or UNF thread available on request
- Available with or without a nut.

[... Read more](#)



---

**Material:** Stainless steel AISI 316

**Temperature range:** -50°C to +100°C and briefly up to +200°C

**Finish:** High polished.

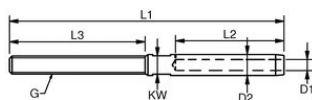
**Note:** Part codes ending in an "N" include a nut.

**Warning:** It is strongly recommended to lubricate threads first, before tensioning.

## Thread Terminals Metric - TTM

---

Blueprint



## Thread Terminals Metric - TTM

### Technical data

Part code	Rope Ø range mm	MBL ton	Thread	G thread mm	D1 mm	D2 mm	L1 mm	L2 mm	L3 mm	KWmm mm	Weight kg/100pc
1207900205	2	0.8	R*	M5	2.2	5.5	80	24	42	4.5	1.4
1207900306N	3	1.2	R*	M6	3,3	6,35	100	38	48	5,0	2
1207900306	3	1.2	R*	M6	3,3	6,35	100	38	48	5,0	2
1207910306	3	1.2	L*	M6	3,3	6,35	100	38	48	5,0	2
1207900406	4	1.2	R*	M6	4,4	7,50	110	45	48	6,0	2.4
1207910406	4	1.2	L*	M6	4,4	7,50	110	45	48	6,0	2.4
1207900508	5	2.2	R*	M8	5,3	9,00	123	51	57	7,0	4
1207900510	5	2.5	R*	M10	5,3	9,00	130	51	63	7,0	4.5
1207900610	6	3.5	R*	M10	6,5	12,58	145	64	63	11	8.4
1207900612	6	5.1	R*	M12	6,5	12,58	162	64	80	11	11
1207900714	7	6.8	R*	M14	7,5	14,20	180	70	89	12	16
1207900812	8	5.1	R*	M12	8,4	16,00	185	83	80	14	19.2
1207910812	8	5.1	L*	M12	8,4	16,00	185	83	80	14	19.2
1207900814	8	6.9	R*	M14	8,4	16,00	194	83	89	14	20
1207900816	8	8.7	R*	M16	8,4	16,00	203	83	100	14	23
1207910816	8	8.7	L*	M16	8,4	16,00	203	83	100	14	23
1207901016	10	9.4	R*	M16	10,5	17,80	210	89	100	15	35
1207911016	10	9.4	L*	M16	10,5	17,80	210	89	100	15	35
1207901020	10	9.7	R*	M20	10,5	17,80	230	89	120	15	35
1207911020	10	9.7	L*	M20	10,5	17,80	230	89	120	15	35
1207901220	12	11.4	R*	M20	12,5	20,00	249	105	120	17	45
1207901422	14	15.9	R*	M22	14,8	25,00	308	140	140	22	76.8
1207901622	16	18.2	R*	M22	17,0	28,00	333	160	140	25	97.8
1207901624	16	19.4	R*	M24	17,0	28,00	363	160	170	25	111
1207902636	26	41	R*	M36	27,5	46,00	550	280	220	41	470