

## Portable Davit Crane 5PT20

---

### Product information



#### 907 kg capacity portable Davit Crane

- Load ratings up to 907 kg portable, heaviest part component 34,0 kg
- Rugged and affordable
- Manual or power winch operation (E2)
- 360° rotation
- Boom adjustable to meet wide range of height and reach combinations
- Easy, No-Tools Assembly/Disassembly (all individual components less than 34,0 kg)
- Variety of bases
- 2-Year warranty
- Proof of load 125% of WLL (Optional)

Machinery directive: 2006/42/EC as amended by Directive 95/16/EC.

[... Read more](#)

---

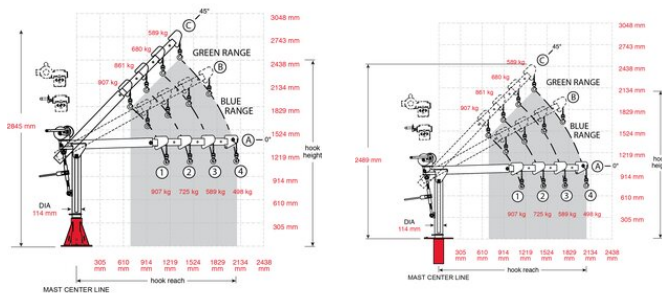
**Marking:** CE-marked

**Finish:** Powder coat

**Note:** Five corrosion-resistant surfaces (powder coating (5PT20), galvanized (5PT20G), stainless 304 (S) and 316 (S316) and three layers of epoxy)

# Portable Davit Crane 5PT20

## Blueprint



## Technical data

Part code	Code	WLL ton	Weight kg
60115PT20M1	5PT20-M1	0.907	109.5
60115PT20GM1	5PT20G-M1	0.907	109.5
60115PT20SM3	5PT20S-M3	0.907	109.5
60115PT20M2	5PT20-M2	0.907	116
60115PT20GM2	5PT20G-M2	0.907	116
60115PT20E2	5PT20-E2	0.907	135.5

### Commander 2000, 5PT20 with Pedestal Base



\* Optional Base extension can provide 380mm more hook height

### Commander 2000, 5PT20 with Flush or Wall base