

## Hand Rope Winch

---

### Product information



- Easy and safe travel.
- Safe automatic load pressure brake.
- Cast iron worm wheel. Hardened worm screw.
- Protection guard around the worm wheel.
- Suspension of lacquered steel plate.
- Every wall mounted winch is marked with its own manufacturing number and is load tested.

[... Read more](#)

---

**Marking:** According to standard

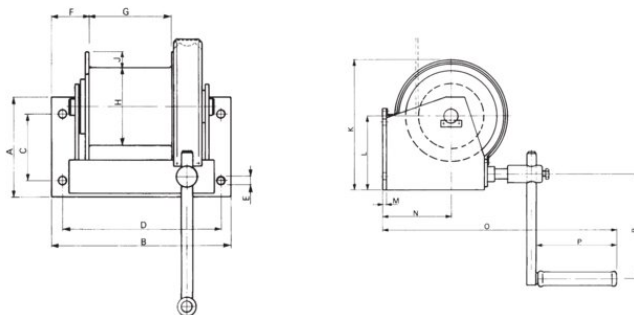
**Finish:** Black matt painted.

**Standard:** EN 13157

**Note:** Excl. wire (to be ordered separately).

# Hand Rope Winch

## Blueprint



## Technical data

Part code	Code	WLL ton	Lift/crank turn (mm)	A mm	B mm	C mm	D mm	Ø E mm	F mm	G mm	Ø H mm	J mm	K mm	L mm	M mm	N mm	O mm	P mm	R max. mm	Weight kg
501300030000180	6211A	0.25	31	157	210	100	183	14	46	71	100	28	225	132	4	116	350	105	225	12
501300060000180	6113A	0.6	29	180	320	120	280	17	63	150	140	28	285	164	8	150	360	145	360	27
501300100000180	6114A	1	26	180	350	120	320	17	63	170	140	52	332	189	10	177	360	145	360	36

	Wire Ø mm*/ Drum capacity (m)						
Model	4	5	6	8	10	12	14
6211	45	27	20				
6113		83	60	23	21		
6114				87	55	38	