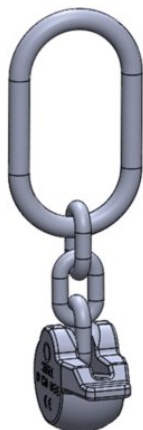


Lifting Eye Starcon, flexible Coupling

Product information



The Starcon lifting eye with flexible coupling joint is used for lifting spherical anchors embedded in precast concrete elements. The spherical claw grabs the head of the spherical anchor. The mounted chain enables the Starcon lifting eye with a flexible coupling to be used at many different angles. The equipment can be reused for many lifting operations.

Areas of application: Used for Starcon spherical anchor.

Advantages: Quick connection and disconnection of anchor.

The self-locking lifting eye prevents accidental release, while the lifting eye can rotate freely around the axis of the anchor.

Its unique geometry allows the anchors to carry their full load even when pulled perpendicularly.

Ability to replace worn components.

Load group: 1.3t – 20t

Technical information: CE marking according to MD 2006/42 EF

Starcon product is designed according to EN13155-2009 and follows the guidelines of VDI/BV-BS 6205 and DS/CEN/TR 15728.

... [Read more](#)

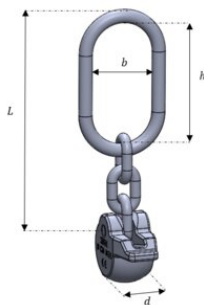
Marking: CE-marked, batch code, load group + S(Starcon)

Finish: Electro-galvanized - Corrosion class C3 - ISO 12944-2.

Note: The delivery time for the individual products is estimated and if the desired quantity is not in stock, please contact [CERTEX Danmark A/S – Starcon](#) for information on the applicable delivery time.

Lifting Eye Starcon, flexible Coupling

Blueprint



Technical data

Part code	Load grp. t	b mm mm	dmm mm	h mm mm	L mm	Weight	Packing Qty.
650230013001	1-1.3	50	34	110	200	0.7	1
650230025001	1.5-2.5	60	42	120	233	1.28	1
650230050001	3-5.0	60	57	120	266	2.73	1
650230100001	6-10.0	100	72	200	425	7.05	1
650230200001	12-20.0	120	114	250	542	17	1