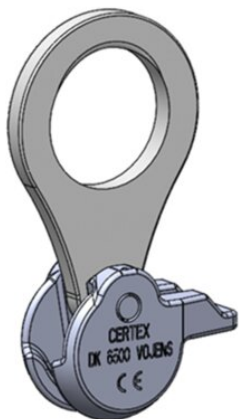


Lifting Eye Starcon, standard Coupling

Product information



The Starcon lifting eye with standard coupling joint is used for lifting spherical anchors embedded in precast concrete elements. The spherical claw grabs the head of the spherical anchor. The lifting eye can be mounted to a crane hook or other lifting gear. The plate can rotate around the lifting eye, which enables lifting with different inclinations. The equipment can be reused for many lifting operations.

Areas of application:

Used for Starcon spherical anchor.

- **Advantages:** Quick connection and disconnection of anchor.
The self-locking lifting eye prevents accidental release, while the lifting eye can rotate freely around the axis of the anchor.
Its unique geometry allows the anchors to carry their full load even when pulled perpendicularly.
- **Load group:** 1.3t – 20t
- **Technical information:**
CE marking according to MD 2006/42 EF
Starcon product is designed according to EN13155-2009 and follows the guidelines of VDI/BV-BS 6205 and DS/CEN/TR 15728.

... [Read more](#)

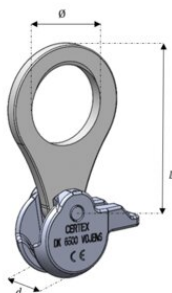
Marking: CE-marked, batch code, load group + S(Starcon)

Finish: Electro-galvanized - Corrosion class C3 - ISO 12944-2.

Note: The delivery time for the individual products is estimated and if the desired quantity is not in stock, please contact [CERTEX Danmark A/S – Starcon](#) for information on the applicable delivery time.

Lifting Eye Starcon, standard Coupling

Blueprint



Technical data

Part code	Load grp. t	d mm	L mm	Ø mm mm	Weight kg	Packing Qty.
650220013001	1-1.3	34	103.5	42	0.61	1
650220025001	1.5-2.5	42	135.5	60	1.12	1
650220050001	3-5.0	57	156	62	2.39	1
650220100001	6-10.0	72	237	100	5.6	1
650220200001	12-20.0	114	289	120	13.38	1