

STA Former Starcon

Product information



Starcon STA former are soft plastic components used to embed a STA anchor in concrete. The anchor head is placed in the mold, which is then attached to the formwork.

After the concrete has hardened, the former is removed, leaving the anchor head free of concrete in a semi-circular recess. This allows the ring coupling to be fitted. Each former can be used several times if cleaned and lubricated after each use.

Areas of application: Used for embedding a Starcon STA anchor in concrete.

Advantages: Quick coupling and disconnection of the STA anchor.

This product is recyclable.

Load group: 2.5t – 26t

Technical information: CE marking according to MD 2006/42 EC [... Read more](#)

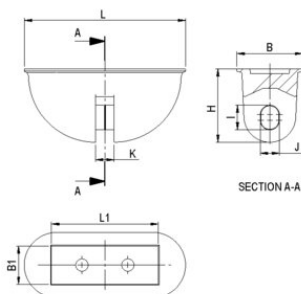
Marking: CE-marked, batch code, load group + S(Starcon)

Finish: Colored Black

Note: The delivery time for the individual products is estimated and if the desired quantity is not in stock, please contact [CERTEX Danmark A/S—Starcon](#) for information on the applicable delivery time.

STA Former Starcon

Blueprint



Technical data

Part code	Load grp. t	L mm	B mm	H mm	L1 mm	B1 mm	I mm	J mm	K mm	Packing Qty.
650350025001	2.5	104	43	46	71	22	18	12	10	1
650350050001	5	130	53	59.5	86	31	20	15.5	15	1
650350100001	10	188	79	84.5	125	43	28	23	20	1
650350260001	26	238	116	119.5	180	66	46	34.5	30	1