

Transport Anchor with Cross-pin Starcon

Product information



The Starcon crossbar transport anchor is designed with an internal thread for transporting and fastening concrete elements. The transport with cross-pin can be used to lift and secure wall or tunnel elements and can be attached directly to the reinforcement mesh in precast concrete elements.

The cross-hole transport anchor is available with a metric thread, which makes it easy to attach wire rope straps and threaded lifting equipment by screwing these onto the transport anchor. The cylindrical internal thread assembly enables a reliable connection to the wire rope strap, ensuring an efficient and safe lifting operation.

Areas of application: Concrete elements, beams or columns.

Advantages: Low dead weight

Quick on and off lifting equipment

Load group: 0.5t – 2.5t

Technical information: CE marking according to MD 2006/42 EF

Starcon product is designed according to EN13155-2009 and follows the guidelines of VDI/BV-BS 6205 and DS/CEN/TR 15728.

EPD: Our Environmental Product Declarations (EPDs) are available in the LCA NO calculator/software. These EPDs have been prepared in strict accordance with ISO 14025 and EN 15804 standards.

Download the EPDs from the LCA database:

Untreated Products: [Starcon Lifting and Handling Systems for Concrete elements - Untreated - EPD Norge](#)

Surface treated Products: [Starcon Lifting and Handling Systems for Concrete elements - Surface Treated. - EPD Norge](#)

... [Read more](#)

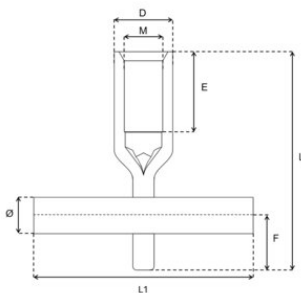
Marking: CE-marked, Thread size, batch code, load group + S(Starcon)

Finish: Electro-galvanized - Corrosion class C3 - ISO 12944-2.

Note: The delivery time for the individual products is estimated and if the desired quantity is not in stock, please contact [CERTEX Danmark A/S – Starcon](#) for information on the applicable delivery time.

Transport Anchor with Cross-pin Starcon

Blueprint



Technical data

Part code	Thread mm	Load grp. t	Length mm	M mm	L mm	D mm	E mm	Ø mm mm	L1 mm	F mm	Weight kg	Packing Qty.
650535NK3012ZNP	M12	0.5	60	M12	60	15	25	10	60	13	0.072	250
650535NK3016ZNP	M16	1.2	79	M16	79	21	32	12	80	20	0.172	100
650535NK3016100ZNP	M16	1.2	100	M16	100	21	45	12	100	20	0.232	60
650535NK3020ZNP	M20	2	99	M20	99	27.2	37	14	100	24	0.36	60
650535NK3020120ZNP	M20	2	120	M20	120	27.2	45	14	100	24	0.392	40
650535NK3024ZNP	M24	2.5	110	M24	110	31	40	14	100	24	0.43	40