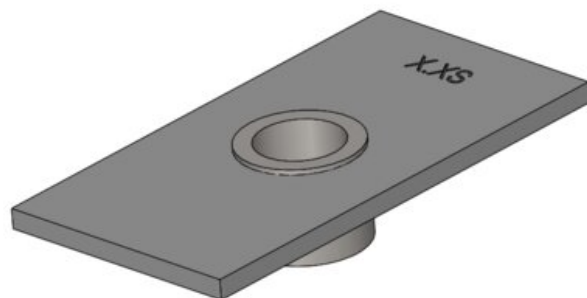


Threaded Plate

Product information



Threaded plate for Starcon former.

Material: S235.

Note: The delivery time for the individual products is estimated and if the desired quantity is not in stock, please contact [CERTEX Denmark A/S – Starcon](#) for information on the applicable delivery time.

Part code	Thread mm	Load grp. t	D mm	H mm	L	W mm	t mm	Packing Qty.	Delivery time
650320013001	M8	1.3	9,8	16	8,5	28	2	100	2
650320025001	M10	2.5	12	20	9	38	2	100	2
650320050001	M10	5	12	25	9	48	2	100	2
650320100001	M12	10	14,3	30	14,5	58	2	50	2
650320200001	M12	20	14,3	40	14,5	78	2	50	2

Blueprint

