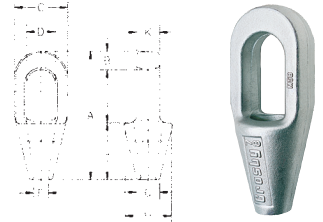


## CL wiresko, lukket type G-417

## Spelter socket, type G-417, closed

the **Crosby** group  
inc.



Galvaniseret wiresko, som bevarer wirens brudstyrke 100%.

Galvanized spelter socket generates the wire rope breaking load 100%.

Art. No.	Rope dia. mm	Structural strand dia. mm	A	B	C	D	F	G	H	J	K	L	Weight each kg
01-7013007	6-7	-	116	12,7	39,6	22,4	9,65	17,5	39,6	57,2	12,7	46,0	0,23
01-7013010	8-10	-	125	15,8	42,9	24,6	12,7	20,6	42,9	57,2	17,5	52,3	0,34
01-7013013	11-13	-	140	17,5	51,0	29,5	14,2	23,9	51,0	63,5	22,4	58,7	0,68
01-7013016	14-16	12-13	162	20,6	67,0	35,8	17,5	30,2	67,0	76,2	25,4	65,0	1,13
01-7013018	18	14-16	194	26,9	76,2	42,2	22,4	33,3	70,0	89,0	31,8	77,7	1,92
01-7013022	20-22	18-19	226	33,3	92,0	49,3	25,4	38,1	82,5	102	38,1	90,5	3,28
01-7013026	24-26	20-22	254	36,6	105	58,5	28,7	44,5	95,5	114	44,5	103	4,76
01-7013030	28-30	24-26	283	39,6	114	65,0	31,8	51,0	105	127	51,0	116	6,46
01-7013035	32-35	28	309	41,4	127	71,0	38,1	58,5	119	138	56,5	129	8,95
01-7013038	38	30-32	355	49,3	137	81,0	41,4	70,5	132	151	62,5	155	13,24
01-7013042	40-42	33-35	390	54,0	146	82,5	44,5	76,2	140	165	70,0	171	16,32
01-7013048	44-48	36-40	445	55,5	171	95,5	51,0	79,5	162	191	76,2	198	25,96
01-7013054	50-54	42-45	505	62,0	194	111	57,2	95,5	187	216	82,5	224	35,83
01-7013060	56-60	46-48	546	70,0	216	127	66,8	105	210	229	92,0	248	47,62
01-7013067	64-67	50-54	597	79,5	241	140	74,5	114	235	248	102	270	63,50
01-7013073	70-73	56-62	645	79,5	273	159	79,5	124	259	279	124	286	99,79
01-7013080	75-80	64-67	689	85,6	292	171	86,0	133	292	305	133	298	125
01-7013086	82-86	70-73	743	102	311	184	92,0	146	311	330	146	311	142
01-7013092	88-92	76-80	787	102	330	197	98,5	160	330	356	159	330	181
01-7013102	94-102	-	845	108	362	216	108	184	362	381	178	356	246

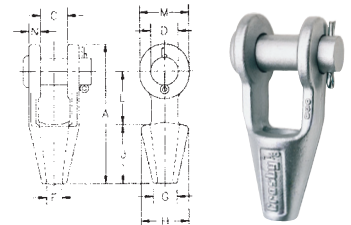
\* Stiften diameter må ikke overstige stiften der anvendes på samlingspart til 416 wiresko. Dimensioner angivet i mm.

\* Diameter of pin must not exceed pin used on companion 416 socket. Dimensions in mm.

## CL wiresko, åben type G-416

## Spelter socket, type G-416, open

the **Crosby** group  
inc.



Galvaniseret wiresko, som bevarer wirens brudstyrke 100%.

Galvanized spelter socket generates the wire rope breaking load 100%.

Art. No.	Rope dia. mm	Structural strand dia. mm	A	C	D	F	G	H	J	L	M	N	Weight each kg
01-7012007	6-7	-	116	19,1	17,5	9,65	17,5	39,6	57,0	39,6	33,3	9,15	0,50
01-7012010	8-10	-	123	20,6	20,6	12,7	20,6	42,9	57,0	44,5	38,1	11,2	0,59
01-7012013	11-13	-	141	25,4	25,4	14,2	23,9	47,8	63,5	51,0	47,8	12,7	1,02
01-7012016	14-16	12-13	171	31,8	30,2	17,5	28,7	57,0	76,0	63,5	57,0	14,2	1,63
01-7012018	18	14-16	202	38,1	35,1	20,6	31,8	66,5	89,0	76,0	66,5	15,7	2,64
01-7012022	20-22	18-19	235	44,5	41,4	23,9	38,1	82,5	102	89,0	79,5	20,3	4,38
01-7012026	24-26	20-22	268	51,0	51,0	28,7	44,5	95,5	114	102	95,5	22,4	7,03
01-7012030	28-30	24-26	300	57,0	57,0	31,8	51,0	105	127	117	105	25,4	9,75
01-7012035	32-35	28	335	63,5	63,5	38,1	57,0	121	140	127	121	28,7	14,1
01-7012038	38	30-32	384	76,0	70,0	41,4	70,0	133	152	152	137	30,2	21,4
01-7012042	40-42	33-35	413	76,0	76,0	44,5	76,0	140	165	165	146	33,3	24,9
01-7012048	44-48	36-40	464	89,0	89,0	51,0	79,5	162	191	178	165	39,6	37,2
01-7012054	50-54	42-45	546	102	95,5	57,2	95,5	187	216	229	178	46,0	59
01-7012060	56-60	46-48	597	114	108	63,5	102	210	229	254	197	54,0	76
01-7012067	64-67	50-54	648	127	121	73,0	114	235	248	274	216	60,5	114
01-7012073	70-73	56-62	692	133	127	79,0	124	267	279	279	229	73,0	143
01-7012080	75-80	64-67	737	146	133	86,0	133	282	305	287	241	76,0	172
01-7012086	82-86	70-73	784	159	140	92,0	146	302	330	300	254	79,0	197
01-7012092	88-92	76-80	845	171	152	98,5	165	314	356	318	274	82,5	255
01-7012102	94-102	-	921	191	178	108	184	346	381	343	318	89,0	355

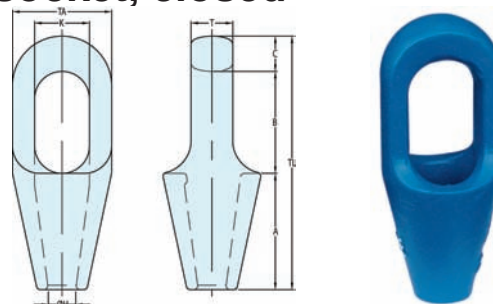
Dimensioner angivet i mm.

Dimensions in mm.

Der tages forbehold for trykfej og udgåede varer / Specifications and products are subject to change

## Wiresko, lukket

## Spelter socket, closed



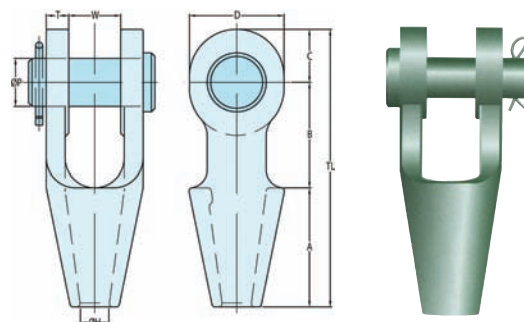
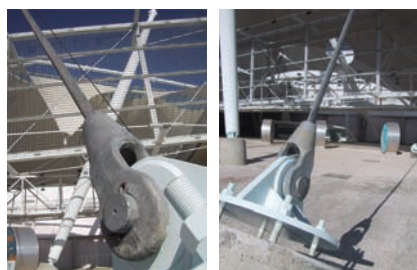
Galvaniseret eller malet wiresko, som bevarer wires brudstyrke 100%.

Galvanized or painted spelter socket generates the wire rope breaking load 100%.

Art. No.	Model	MBL ton	For wire ø mm	A mm	B mm	C mm	ø H mm	K mm	T mm	TA mm	TL mm	Weight kg
01-7011013	CSS 298	20	11-13	63,5	59	17,5	14	30	22,5	51	140	0,7
01-7011016	CSS 299	25	14-16	76	65	21	17,5	36	26	67	162	1,3
01-7011019	CSS 200	40	18-19	89	78	27	21	42	32	76	194	2,1
01-7011022	CSS 201	55	20-22	101	90	33	24	47	38	92	224	3,6
01-7011026	CSS 204	75	23-26	114	103	36	28	57	44	104	253	5,3
01-7011030	CSS 207	90	27-30	127	116	39	32	63	51	114	282	7
01-7011036	CSS 212	125	31-36	139	130	43	38	70	57	127	312	9,7
01-7011039	CSS 215	150	37-39	152	155	51	41	79	63	136	358	13
01-7011042	CSS 217	170	40-42	165	171	54	44	83	70	146	390	17
01-7011048	CSS 219	225	43-48	190	198	55	51	93	76	171	443	26
01-7011054	CSS 222	280	49-54	216	224	62	57	100	82	193	502	37,5
01-7011060	CSS 224	360	55-60	228	247	73	63	112	92	216	548	50
01-7011068	CSS 228	425	61-68	248	270	79	73	140	102	241	597	65
01-7011075	CSS 227	460	69-75	279	286	79	79	159	124	273	644	94
01-7011080	CSS 228	560	76-80	305	298	83	86	171	133	292	686	110
01-7011086	CSS 229	625	81-86	330	311	102	92	184	146	311	743	145
01-7011093	CSS 230	720	87-93	356	330	102	99	197	159	330	788	182
01-7011102	CSS 231	875	94-102	381	356	108	108	216	178	362	845	210
01-7011115	CSS 233	1.200	108-115	450	425	125	125	235	190	405	1.000	330
01-7011130	CSS 240	1.300	120-130	500	525	125	138	260	200	450	1.150	500

## Wiresko, åben

## Spelter socket, open



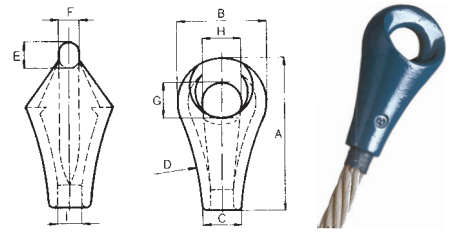
Galvaniseret eller malet wiresko, som bevarer wires brudstyrke 100%.

Galvanized or painted spelter socket generates the wire rope breaking load 100%.

Art. No.	Model	Wire dia ø mm	MBL ton	A mm	B mm	C mm	D mm	ø H mm	ø P mm	T mm	TL mm	W mm	Weight kg
01-7010013	OSS 198	11-13	20	64	51	27	50	14	25	12	142	25	1
01-7010016	OSS 199	14-16	25	76	63	32	58	17,5	30	14	171	32	1,8
01-7010019	OSS 100	18-19	40	89	76	40	70	21	35	16	205	38	3,2
01-7010022	OSS 104	20-22	55	101	89	45	80	24	41	19	235	44	4,6
01-7010026	OSS 108	23-26	75	114	101	60	104	28	51	22	275	51	8
01-7010030	OSS 111	27-30	90	127	114	65	114	32	57	25	306	57	11
01-7010036	OSS 115	31-36	125	139	127	72	126	38	63	28	338	63	16
01-7010039	OSS 118	37-39	150	152	162	80	142	41	70	30	394	76	23
01-7010042	OSS 120	40-42	170	165	165	88	152	44	76	33	418	76	27
01-7010048	OSS 125	43-48	225	190	178	100	176	51	89	39	468	89	41
01-7010054	OSS 128	49-54	280	216	228	108	194	57	95	46	552	101	58
01-7010060	OSS 130	55-60	360	228	250	120	210	63	108	53	598	113	85
01-7010068	OSS 132	61-68	425	248	273	133	236	73	121	60	654	127	118
01-7010075	OSS 135	69-75	460	279	279	138	240	79	127	73	696	133	155
01-7010080	OSS 138	75-80	560	305	286	146	252	86	133	76	737	146	173
01-7010086	OSS 140	81-86	625	330	298	160	290	92	140	79	788	159	230
01-7010093	OSS 142	87-93	720	356	318	178	320	99	152	83	852	171	265
01-7010102	OSS 144	94-102	875	381	343	190	350	108	178	89	914	191	370
01-7010115	OSS 146	108-115	1.200	460	480	215	400	125	195	100	1.145	205	525
01-7010130	OSS 150	120-130	1.300	500	500	280	560	138	250	110	1.280	225	900

Specifications and products are subject to change / Der tages forbehold for trykfejl og udgåede varer

## Nemag tovpære / Nemag rope pear socket



For montering af wire ved indstøbning.

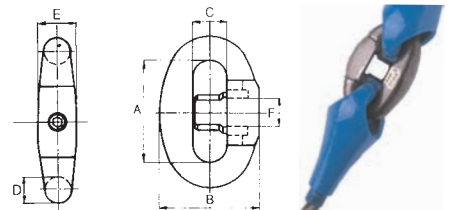
For wire rope socketing.

Art. No.	Pear size	Rope dia	Working load kg*	Breaking load kg	A	B	C	D	E	F	G	H	I	Weight kg
01-7014013	2	12-13	2.000	14.000	94	56	25	195	15,5	13,5	22	25	14	0,5
01-7014015	3	14-15	2.500	17.500	108	64	28	220	17,5	15,5	24	29	16	0,6
01-7014017	4	16-17	3.000	22.500	122	70	31	220	19,5	17,5	26	31	18	0,9
01-7014019	5	18-19	4.500	27.500	135	84	33	245	21	19	30	42	20	1,3
01-7014021	6	20-21	5.000	35.000	152	84	36	310	23	21	33	38	23	1,7
01-7014024	7	22-24	7.000	42.500	166	100	40	310	26	23	37	48	26	2,3
01-7014027	8	25-27	8.000	52.500	186	100	43	350	28	25	39	44	29	3,2
01-7014030	9	28-30	11.000	70.000	202	120	45	350	31	27	40	58	32	4,1
01-7014033	10	31-33	13.000	85.000	222	120	52	445	32	28,5	45	56	35	5,2
01-7014036	11	34-36	15.000	95.000	239	142	55	445	36	31,5	50	70	40	6,4
01-7014039	12	37-39	17.000	110.000	264	142	60	495	39	34,5	51	64	41	7,9
01-7014042	13	40-42	21.000	125.000	285	166	63	555	43	36,5	59	80	44	9,5
01-7014045	14	43-45	26.000	155.000	312	166	68	595	47	40	62	72	48	11,2
01-7014048	15	46-48	30.000	180.000	337	170	75	595	51	44	66	68	53	13,0
01-7014057	17	52-56	42.500	240.000	400	220	84	880	60	54	75	90	59	23,0

\* Working load er maksimal arbejdsbelastning for arbejde med grab.  
For andre formål anvendes sikkerhedsfaktor 5:1. Målangivelse i mm.

\* Working load is max. working load for grabbing operations.  
For other operations apply the min. safety factor 5. Dimensions in mm.

## Nemag sjækel / Nemag shackle



Leveres til alle tovpærer.

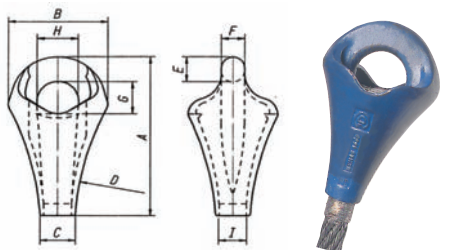
For all rope pear sockets.

Art. No.	Link size	Working load kg*	Breaking load kg	A	B	C	D	E	F	Weight kg
01-7014104	4	3.000	25.000	76	76	24,5	19	30	21	0,9
01-7014105	5	4.500	33.000	84	84	27	21	33	23	1,2
01-7014106	6	5.000	37.500	92	92	29,5	23	35	25	1,5
01-7014107	7	7.000	49.000	100	100	32	25	38	28	2,0
01-7014108	8	8.000	54.000	108	108	34,5	27	41	31	2,5
01-7014109	9	9.500	60.000	116	116	37	29	44	34	3,1
01-7014110	10	12.000	75.000	128	128	40,5	32	48	37	4,4
01-7014111	11	15.000	95.000	140	140	44	35	53	40	5,7
01-7014112	12	17.000	110.000	152	152	47,5	38	57	43	7,2
01-7014113	13	21.000	135.000	164	164	51	41	62	46	8,7
01-7014114	14	26.000	160.000	176	173	54	44	66	50	11,0
01-7014115	15	30.000	175.000	188	188	58	47	71	52	13,5
01-7014117	17	42.500	260.000	222	222	68	56	84	62	23,0

\* Anbefalet belastning for arbejde med grab. Målangivelse i mm.

\* Recommended load for grabbing operations. Dimensions in mm.

## Nemag tovpære / Nemag rope pear socket



Art. No.	Pear size	Rope dia.	Working load kg	Breaking load kg	A	B	C	D	E	F	G	H	I	Weight kg
01-7014201	924	22-24	11.000	70.000	202	132	40	325	31	27	40	58	27	4
01-7014202	1.026	25-27	13.000	85.000	222	143	43	375	32	28,5	46	66	30	5
01-7014203	1.130	28-30	15.000	95.000	239	156	45	400	36	31,5	50	70	33	7
01-7014204	1.232	31-33	17.000	110.000	249	165	52	425	39	34,5	52	72	36	8,5
01-7014205	1.336	34-36	21.000	125.000	285	184	55	450	43	36,5	60	80	40	9,5
01-7014206	1.440	37-40	26.000	155.000	297	192	60	475	47	40	62	80	44	12
01-7014207	3.221	42-44	32.500	189.000	314	204	66	425	53	46	70	80	47	13,5
01-7014208	1.548	46-48	30.000	180.000	329	192	67	675	51	44	66	80	52	12,5
01-7014209	1.648	46-48	36.000	215.000	343	218	70	500	56	50	75	90	52	18

Der tages forbehold for trykfejl og udgåede varer / Specifications and products are subject to change

## Wirelock

### Støbemasse til tovpære

- 100% effektiv afslutning.
- Driftstemperatur er mellem -54°C til +115°C.
- Ideelt til „on site“ anvendelser.
- Intet risikabelt smeltet metal.
- Forbedret træthedsstyrke.
- Støbningstemperatur uden boosterpakke er 9°C til 43°C.
- En boosterpakke hvis støbetemperaturen er 0°C til 9°C.
- To boosterpakker hvis støbetemperaturen er -10°C til 0°C.
- Vi henviser til Wirelock Tekniske Manual for mere information.



Art. No.	Ltr.	Weight kg
01-9011002	0,25	0,57
01-9011005	0,5	1,15
01-9011010	1,0	2,08
01-9011020	2,0	4,08

### Resin for spelter socket

- 100% termination efficiency.
- Temperature operating range is -54°C to +115°C.
- Ideal for on site applications.
- No hazardous molten metal.
- Improved fatigue lift.
- Pouring temperature without booster pack is 9°C to 43°C.
- One booster pack if pouring temperature is 0°C til 9°C.
- Two booster packs if pouring temperature is -10°C to 0°C.
- Refer to Wirelock Technical Manual for more information.

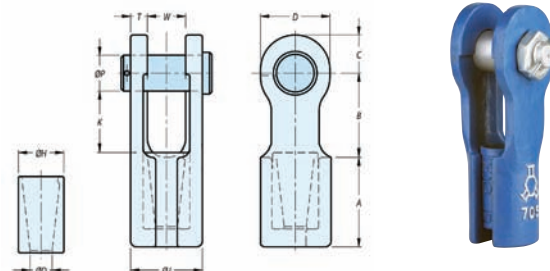
## Mobilkran wiresko

Designet til brug af mobilkraner.  
 Kan anvendes til alle slags konstruktioner af wire inkl. dyform wire, rotationsfri wire og standard 6-slået wire.

Art. No.	Wire rope size mm	Min. breaking load T	A	B	C	ø D	ø P	T	W	D	ø H	ø J	K	Weight kg
01-7015013	11-13	20	62	61	27	15	25	12	25	50	33	49	46	1,6
01-7015016	13-16	25	72	78	32	18	30	14	32	58	38	60	59	2,6
01-7015019	16-19	40	85	93	40	21	35	16	38	70	45	70	69	4,5
01-7015023	20-22	55	102	106	45	24	41	19	44	80	50	82	81	6,5
01-7015026	23-26	75	115	123	60	28	51	22	51	104	60	95	90	11
01-7015029	27-29	90	140	152	65	32	57	25	57	114	70	107	116	16
01-7015032	30-32	125	150	159	73	36	63	28	63	126	80	119	120	18
01-7015036	33-36	125	160	171	73	39	64	28	69	126	85	125	130	23

## Fast connector socket

Designed for use with mobile cranes.  
 Can be used to terminate all constructions of wire rope including high performance ropes, anti-rotation ropes and standard 6 strand ropes.



Specifications and products are subject to change / Der tages forbehold for trykfejl og udgåede varer