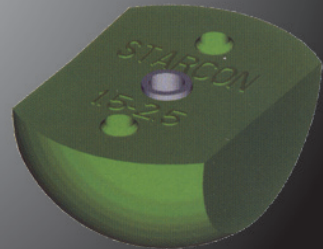


# CERTEX

Lifting Products and Services



STARCON / STARCON



## Starcon

Betonrør og betonelementer er yderst vanskelige at håndtere på grund af vægt og udformning. Håndteringen er ressourcekrævende og kan udgøre en sikkerhedsrisiko.

CERTEX DANMARK A/S tilbyder Starcon løfte- og håndterings-system til betonindustrien bestående af:

Starcon ankre til indstøbning i betonrør og betonelementer.

Starcon løfteøje patenteret.

Starcon formere til brug ved indstøbning af ankre i beton.

Denne kombination giver en hurtig, rationel, økonomisk og sikker arbejdsgang i alle faser.

## STARCON

Concrete Handling System

## Starcon

Concrete pipes and elements are extremely difficult to handle due to their weight and shape. The handling requires lots of resources and may pose an element of risk to safety.

CERTEX DANMARK A/S offers a Starcon lifting and handling system to the concrete industry consisting of:

Starcon anchors for concreting in pipes and elements.

Starcon lifting eye, patented.

Starcon formers for use when casting the anchors in the concrete.

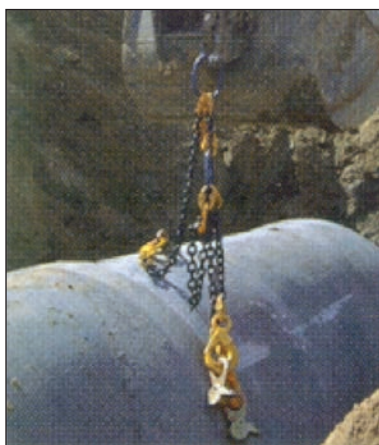
This combination ensures a fast, rational, economical and safe flow of work in all stages.



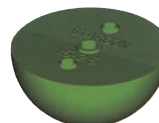
Starcon ankre produceres ved at varmepresse stålmaterialer. Stålet gennemgår en grundig inspektion og kontrol, inden stålet bliver frigivet til produktion. Igennem hele produktionsforløbet bliver der foretaget løbende stikprøver, som sikrer kvaliteten.



Starcon anchors are produced from hot-pressed steel material. The steel undergoes a thorough inspection and verification, before the steel is released for production. Throughout the production process continuous sampling are carried out, which ensures the quality.



Starcon formere er fremstillet af plastmateriale. Dette materiale er meget velegnet til brug ved indstøbning i beton, idet det ikke opsuger vand, der kan forårsage et „vakuum“, som vanskeliggør fjernelsen af formere. Starcon formere er farvede og derfor let genkendelige.



The Starcon formers are made of plastic material. This material is very suitable for concreting because the material does not absorb water resulting in a vacuum, which makes removal of the former difficult. The Starcon formers are made in different colours relating to load bands.

Starcon løfteøjer er fremstillet i en speciel stålstøbelegering, som efter hærkning opnår en exceptionel høj styrke, og materialestyrken overstiger en sikkerhedsfaktor på 5.



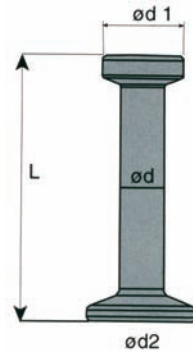
The Starcon lifting eyes are made of a special cast steel alloy which after hardening obtains an exceptionally high strength. The strength of the material exceeds a safety factor of 5.

Starcon løfteøjene er konstrueret som en kugle med en anhugningsklo, hvorved man let og sikkert fikserer Starcon ankeret.

The Starcon lifting eyes are constructed as a ball with a hooking claw thus providing an easy and safe fixing on the Starcon anchor.

## Starcon anker system

**STARCON**  
Concrete Handling System



### 1,3 T

Art. No.	T	kN	L mm	Ød mm	Ød1 mm	Ød2 mm	Weight kg
09-1010400	1,3	13	40	10	19	25	0,05
09-1010550	1,3	13	55	10	19	25	0,07
09-1010650	1,3	13	65	10	19	25	0,07
09-1010850	1,3	13	85	10	19	25	0,08
09-1011200	1,3	13	120	10	19	25	0,10
09-1012400	1,3	13	240	10	19	25	0,17

### 2,5 T

Art. No.	T	kN	L mm	Ød mm	Ød1 mm	Ød2 mm	Weight kg
09-1030450	2,5	25	45	14	26	35	0,12
09-1030550	2,5	25	55	14	26	35	0,13
09-1030680	2,5	25	68	14	26	35	0,15
09-1030850	2,5	25	85	14	26	35	0,17
09-1031200	2,5	25	120	14	26	35	0,21
09-1031400	2,5	25	140	14	26	35	0,23
09-1031700	2,5	25	170	14	26	35	0,27
09-1032800	2,5	25	280	14	26	35	0,40

### 5,0 T

Art. No.	T	kN	L mm	Ød mm	Ød1 mm	Ød2 mm	Weight kg
09-1050750	5,0	50	75	20	36	50	0,34
09-1050850	5,0	50	85	20	36	50	0,36
09-1050950	5,0	50	95	20	36	50	0,40
09-1051100	5,0	50	110	20	36	50	0,43
09-1051200	5,0	50	120	20	36	50	0,46
09-1051400	5,0	50	140	20	36	50	0,49
09-1051600	5,0	50	160	20	36	50	0,56
09-1051800	5,0	50	180	20	36	50	0,61
09-1052100	5,0	50	210	20	36	50	0,69
09-1052400	5,0	50	240	20	36	50	0,76
09-1053400	5,0	50	340	20	36	50	1,01
09-1054800	5,0	50	480	20	36	50	1,36

### 7,5 T

Art. No.	T	kN	L mm	Ød mm	Ød1 mm	Ød2 mm	Weight kg
09-1071200	7,5	75	120	24	47	60	0,73
09-1071400	7,5	75	140	24	47	60	0,81
09-1071650	7,5	75	165	24	47	60	0,89
09-1072000	7,5	75	200	24	47	60	1,01
09-1073000	7,5	75	300	24	47	60	1,36
09-1075400	7,5	75	540	24	47	60	2,24

## Starcon anchor system



### 10,0 T

Art. No.	T	kN	L mm	Ød mm	Ød1 mm	Ød2 mm	Weight kg
09-1101500	10,0	100	150	28	47	70	1,09
09-1101700	10,0	100	170	28	47	70	1,18
09-1102200	10,0	100	220	28	47	70	1,44
09-1102500	10,0	100	250	28	47	70	1,56
09-1103400	10,0	100	340	28	47	70	1,98
09-1106800	10,0	100	680	28	47	70	3,57

### 15,0 T

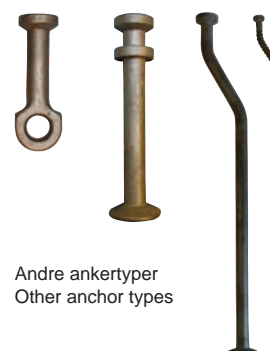
Art. No.	T	kN	L mm	Ød mm	Ød1 mm	Ød2 mm	Weight kg
09-1151650	15,0	150	165	34	70	85	1,97
09-1152000	15,0	150	200	34	70	85	2,21
09-1153000	15,0	150	300	34	70	85	2,91
09-1154000	15,0	150	400	34	70	85	3,59

### 20,0 T

Art. No.	T	kN	L mm	Ød mm	Ød1 mm	Ød2 mm	Weight kg
09-1202500	20,0	200	250	39	70	98	3,30
09-1203400	20,0	200	340	39	70	98	4,38
09-1205000	20,0	200	500	39	70	98	5,87

Sidste ciffer i varenr. indikerer udførelsen af Starcon ankeret som følger:  
0 = Sort udførelse 2 = Varmgalvaniseret.

The last digit of the article number indicates the version of the Starcon anchor:  
0 = Black 2 = Hot dip galvanized.



Andre ankertyper  
Other anchor types

Specifications and products are subject to change / Der tages forbehold for trykfej og udgåede varer

# Starcon former



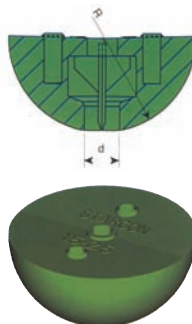
## Starcon former

Farvekodet (uden stæledele)

Art. No.	Size	Colour	D mm.	R mm.	Weight kg.
09-3010130	1,0 / 1,3	Violet	10	30	0,05
09-3030250	1,5 / 2,5	Green	14	37	0,10
09-3050500	3,0 / 5,0	Red	20	47	0,21
09-3070750	6,0 / 7,5	Orange	24	59	0,41
09-3101000	8,0 / 10,0	Orange	28	59	0,41
09-3151500	12,0 / 15,0	Blue	34	80	1,06
09-3202000	16,0 / 20,0	Blue	39	80	1,06

## Starcon former

Colour coded (without steel parts)



## Starcon former

Farvekodet  
(incl. stæledele: gevindpind, plade, fløjmutrik).

Art. No.	Size	Colour	D mm.	R mm.	Weight kg.
09-3010131	1,0 / 1,3	Violet	10	30	0,09
09-3030251	1,5 / 2,5	Green	14	37	0,17
09-3050501	3,0 / 5,0	Red	20	47	0,30
09-3070751	6,0 / 7,5	Orange	24	59	0,56
09-3101001	8,0 / 10,0	Orange	28	59	0,56
09-3151501	12,0 / 15,0	Blue	34	80	1,26
09-3202001	16,0 / 20,0	Blue	39	80	1,26

## Starcon former

Colour coded  
(incl. Steel parts: plate, threadpin, wingnut).



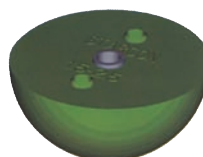
## Starcon former komplet

Farvekodet  
(incl. stæledele: indvendig gevind).

Art. No.	Size	Colour	D mm.	R mm.	Weight kg.
09-3010132	1,0 / 1,3	Violet	10	30	0,07
09-3030252	1,5 / 2,5	Green	14	37	0,12
09-3050502	3,0 / 5,0	Red	20	47	0,24
09-3070752	6,0 / 7,5	Orange	24	59	0,46
09-3101002	8,0 / 10,0	Orange	28	59	0,46
09-3151502	12,0 / 15,0	Blue	34	80	1,12
09-3202002	16,0 / 20,0	Blue	39	80	1,12

## Starcon former complete

Colour coded  
(incl. Steel parts: inside thread).



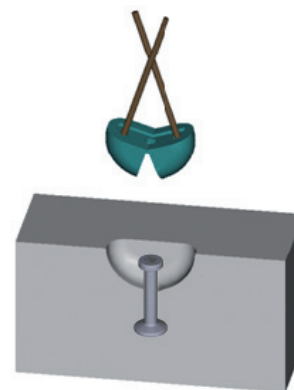
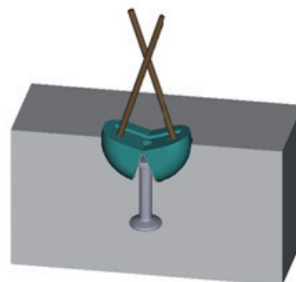
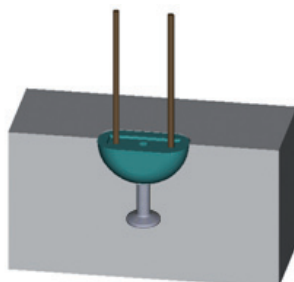
Formerne findes også i smalle udgaver.

All formers are also available in narrow types.

## Gummi former

## Rubber former

Art. No.	Size	Colour
09-3510130	1,3	Black
09-3530250	2,5	Black
09-3550500	5	Black
09-35101000	6/10	Black
09-35102000	12/20	Black



Fjernelse af formerne.

Removing the formers.

## Starcon løfteøjer

Starcon løfteøjerne er konstrueret som en kugle med en anhængingsklo, hvormed man let og sikkert fikserer Starcon ankeret.

Starcon løfteøjer er patenteret og produceret i fem lastgrupper:

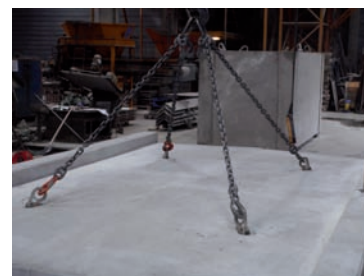
**STARCON**  
Concrete Handling System



## Starcon lifting eye

The Starcon lifting eye is designed as a ball with a hooking claw thus providing an easy and safe fixing on the Starcon anchor.

The Starcon lifting eye is patented and manufactured in five load groups:



### Starcon koblingsled

Standard udførelse

### Starcon coupling link

Standard

Art. No. coupling	Art. No. coupling + eye	WLL T	Ø mm	L mm	Weight kg
09-2011311	09-2010131	1,0 / 1,3	40	105	0,2
09-2032511	09-2030251	1,5 / 2,5	55	140	0,4
09-2055011	09-2050501	3,0 / 5,0	60	155	0,7
09-2101011	09-2101001	6,0 / 10,0	100	232	2,4
09-2202011	09-2202001	12,0 / 20,0	120	292	5,7



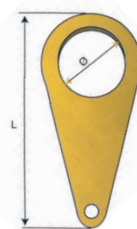
### Starcon koblingsled

Lang udførelse

### Starcon coupling link

Large

Art. No. coupling	Art. No. coupling + eye	WLL T	Ø mm	L mm	Weight kg
09-2011322	09-2010132	1,0 / 1,3	47	154	0,2
09-2032522	09-2030252	1,5 / 2,5	60	183	0,4
09-2055022	09-2050502	3,0 / 5,0	70	222	0,7
09-2101022	09-2101002	6,0 / 10,0	100	323	2,4
09-2202022	09-2202002	12,0 / 20,0	110	386	5,7



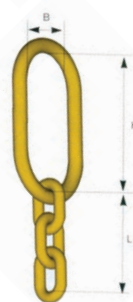
### Starcon koblingsled

Flexibelt

### Starcon coupling link

Flexible

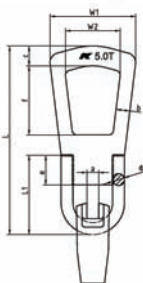
Art. No. coupling	Art. No. coupling + eye	WLL T	B mm	H mm	L mm	Weight kg
09-2011333	09-2010133	1,0 / 1,3	50	110	72	0,2
09-2032533	09-2030253	1,5 / 2,5	60	120	90	0,4
09-2055033	09-2050503	3,0 / 5,0	60	120	117	0,7
09-2101033	09-2101003	6,0 / 10,0	100	200	180	2,4
09-2202033	09-2202003	12,0 / 20,0	120	250	234	5,7



### Løfteøjer

### Lifting eye

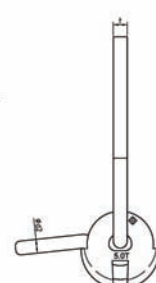
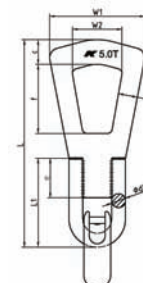
Art. No.	WLL t	L	L1	e	W1	W2	d	a	b	c	t	f
09-590080	1,3	190	80	30	86,5	55	12	11	14	20	12	70
09-590081	2,5	215	90	40	100	56	14	16	20	25	14	70
09-590082	5,0	270	115	45	122	69	20	21	25	37	20	85
09-590083	7,5 & 10	365	160	75	154	90	22	30	31	50	25	115



### Ringkobling

### Ringcoupling

Art. No.	WLL t	L	L1	e	W1	W2	d1	d2	a	b	c	t	f
03-7070002	2,5	210	90	40	97	54	14	14	16	20	25	14	70
03-7070005	5	270	115	45	122	66	20	18	24	25	37	20	85
03-7070010	7,5 & 10	365	160	75	154	83	22	22	30	31	50	25	105



Specifications and products are subject to change / Der tages forbehold for trykfej og udgåede varer

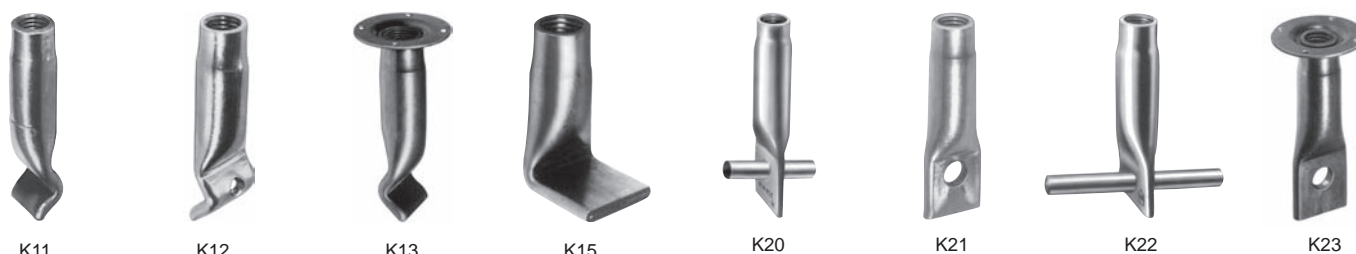
## Schroeder-Neuenrade anker system / Schroeder-Neuenrade anchor system



Vi lagerfører et bredt sortiment af kvalitetsprodukter fra Fa. Schroeder-Neuenrade (mm-gevind). Se også [www.schroeder-neuenrade.de](http://www.schroeder-neuenrade.de).

We have a large assortment of Fa. Schroeder-Neuenrade products in stock (mm-thread). See also [www.schroeder-neuenrade.de](http://www.schroeder-neuenrade.de).

### Inserts til fastgørelse / Inserts for fastening



K11

K12

K13

K15

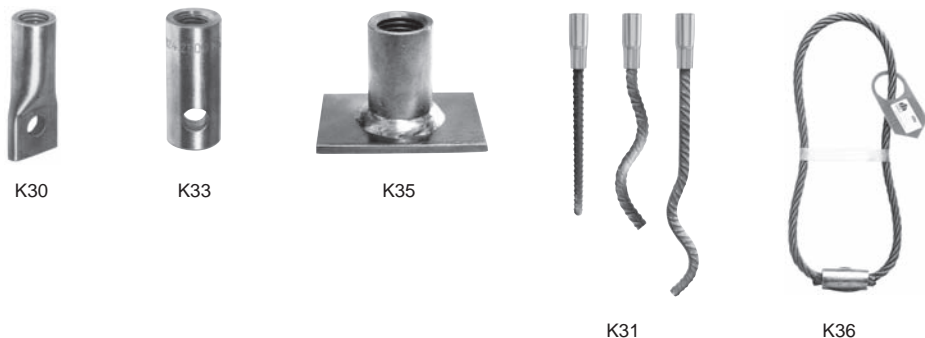
K20

K21

K22

K23

### Transportankre / Anchors



K30

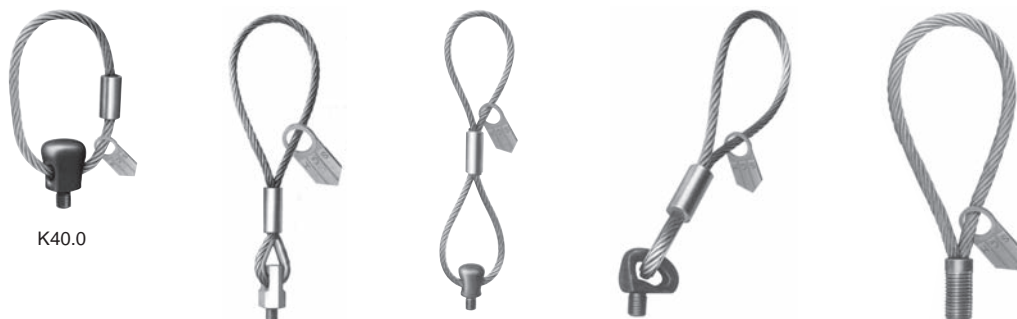
K33

K35

K31

K36

### Wirestroppe / Wire rope



K40.0

K40.6

K40.8

K41

K42

## Boks med stålwire / Steel wire rope coupling

Art. No.	Wire length mm
09-54VS080	80
09-54VS100	100
09-54VS120	120

Der tages forbehold for trykfejl og udgåede varer / Specifications and products are subject to change

