

Rustfri kæde WOX

Stainless chain WOX



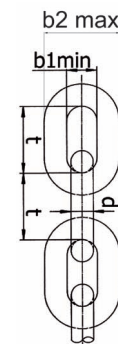
Rustfrit stål løfteskæde, elektrisk svejset og stemplet, garanteret kompatibel med Connex CWI samleled.

Stainless steel lifting chain, electrically welded and stamped, guaranteed compatible with Connex CWI connectors.

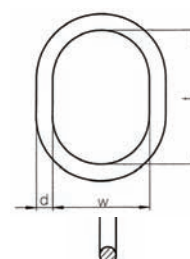
Art. No.	WLL kg	Type	Nominal dia. d	Length	t mm	b1 min mm	b2 max mm	Breaking force kN	Weight kg/m
03-6011004	320	WOX 4	4	50	16	6,0	15,0	12,6	0,34
03-6011005	500	WOX 5	5	50	16	7,5	18,5	20	0,56
03-6011006	750	WOX 6	6	50	18	8,7	21,6	30	0,83
03-6011007	1.000	WOX 7	7	50	21	9,5	25,2	40	1,10
03-6011008	1.250	WOX 8	8	50	24	11,7	27,7	50	1,46
03-6011010	2.000	WOX 10	10	50	30	13,5	36,0	80	2,20
03-6011013	3.200	WOX 13	13	25	39	17,5	46,8	125	3,80
03-6011016	5.000	WOX 16	16	25	48	21,5	57,6	200	5,70

Tilsvarende DIN 5687-1. 100% testet.

Similar DIN 5687-1. 100% tested.



Masterlink AWI



Masterlink til 1- & 2-strengede kæde- og wiresling.
Kan også anvendes som endeled.

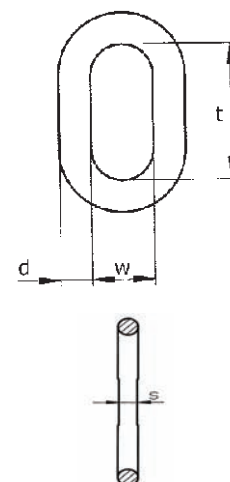
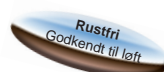
Masterlink for 1- & 2- leg chain- and wire rope slings.
Also to be used as endlink.

Art. No.	WLL 0°-45° kg	Type	Usable up to sling hooks following DIN 15401 No.	d mm	t mm	w mm	s mm	For chain Ø in mm		Weight kg/pc.
								1-leg	2-leg	
03-6013008	450	AWI 8	0,5	8	60	35	-	4	4	0,08
03-6013010	700	AWI 10	1,6	10	80	50	10	5	5	0,14
03-6013013	1.050	AWI 13	2,5	13	110	60	10	6+7	6	0,34
03-6013016	1.400	AWI 16	2,5	17	110	60	14	8	7	0,53
03-6013018	2.000	AWI 18	5	19	135	75	14	10	8	0,92
03-6013022	3.200	AWI 22	6	23	160	90	17	13	10	1,60
03-6013026	5.000	AWI 26	8	27	180	100	20	16	13	2,46
03-6013032	7.100	AWI 32	10	33	200	110	26	-	16	4,14
03-6013036	10.500	AWI 36	16	36	260	140	29	-	-	6,22

Tilsvarende DIN 5688-1. 100% testet.

Similar DIN 5688-1. 100% tested.

Masterlink BWI



Masterlink til 1- & 2-strengede kædesling.
Kan også anvendes som endeled.

Masterlink for 1- & 2- leg chainslings.
Also to be used as endlink.

Art. No.	WLL 0°-45° kg	Type	d mm	t mm	w mm	s mm	Link for chain Ø in mm		Weight kg/pc.
							1-leg	2-leg	
03-6013105	320	BWI 5	5	26	13	-	4	4	0,01
03-6013107	750	BWI 7	7	36	16	-	5+6	5+6	0,03
03-6013109	1.000	BWI 9	9	44	20	-	7	7	0,07
03-6013110	1.250	BWI 10	10	44	20	-	8	8	0,09
03-6013113	2.000	BWI 13	13	54	25	10	10	10	0,17
03-6013116	3.200	BWI 16	17	70	34	14	13	13	0,36
03-6013120	5.000	BWI 20	20	85	40	-	16	16	0,68
03-6013122	6.400	BWI 22	23	115	50	17	-	-	1,16
03-6013126	10.000	BWI 26	27	140	65	20	-	-	1,92

Tilsvarende DIN 5688-1. 100% testet.

Similar DIN 5688-1. 100% tested.

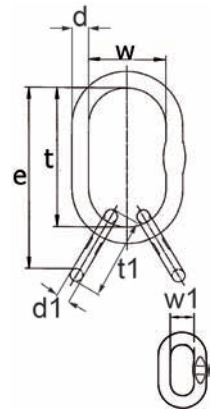
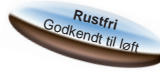
Specifications and products are subject to change / Der tages forbehold for trykfejl og udgåede varer

VOJENS +45 74 54 14 37
HVIDOVRE +45 36 77 40 30
AALBORG +45 98 13 18 88
FREDERICIA +45 75 91 40 00

www.certex.dk

205

Masterlink VWI



Masterlink til 3 & 4-strengede kædesling.

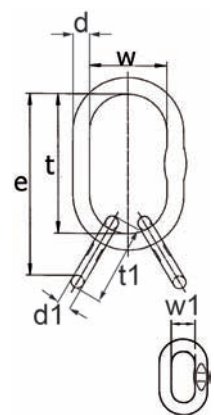
Masterlink for 3 & 4-leg chainslings.

Art. No.	WLL 0°-45° kg	Type	Usable up to sling hooks following DIN 15401 No.	Assembly	e mm	d mm	t mm	w mm	d1 mm	t1 mm	w1 mm	Weight kg/pc.
03-6014004	700	VWI 4	1,6	AWI 10 + 2 BWI 9	124	10	80	50	9	44	20	0,28
03-6014005	1.050	VWI 5	2,5	AWI 13 + 2 BWI 10	154	13	110	60	10	44	20	0,52
03-6014006	2.000	VWI 6	5	AWI 18 + 2 BWI 13	189	19	135	75	13	54	25	1,26
03-6014007	3.200	VWI 7	6	AWI 22 + 2 BWI 16	230	23	160	90	17	70	34	2,32
03-6014010	5.000	VWI 10	8	AWI 26 + 2 BWI 20	265	27	180	100	20	85	40	3,82
03-6014013	7.100	VWI 13	10	AWI 32 + 2 BWI 22	315	33	200	110	23	115	50	6,46
03-6014016	10.500	VWI 16	16	AWI 36 + 2 BWI 26	400	36	260	140	27	140	65	10,06

Tilsvarende DIN 5688-1. 100% testet.

Similar DIN 5688-1. 100% tested.

Masterlink VAWI



Masterlink til 3- & 4-strengede wiresling og kædesling.

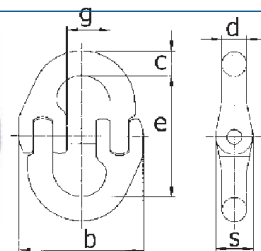
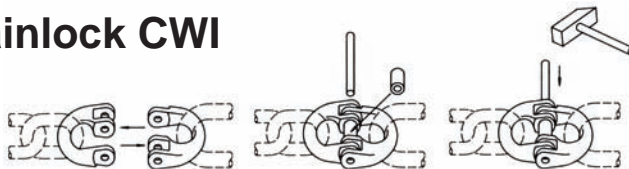
Masterlink for 3- & 4-leg wire ropeslings and chainslings.

Art. No.	WLL 0°-45° kg	Type	Usable up to sling hooks following DIN 15401 No.	Assembly	e mm	d mm	t mm	w mm	d1 mm	t1 mm	w1 mm	Weight kg/pc.
03-6014406	1.600	VAWI 6	2,5	AWI 18 + 2 AWI 13	245	19	135	75	13	110	60	1,60
03-6014407	2.100	VAWI 7	5	AWI 18 + 2 AWI 16	245	19	135	75	17	110	60	1,98
03-6014408	3.000	VAWI 8	6	AWI 22 + 2 AWI 18	295	23	160	90	19	135	75	3,44
03-6014410	4.800	VAWI 10	8	AWI 26 + 2 AWI 22	340	27	180	100	23	160	90	5,66
03-6014413	7.100	VAWI 13	10	AWI 32 + 2 AWI 26	380	33	200	110	27	180	100	9,06
03-6014416	10.500	VAWI 16	16	AWI 36 + 2 AWI 32	460	36	260	140	33	200	110	14,50

Tilsvarende DIN 5688-1. 100% testet.

Similar DIN 5688-1. 100% tested.

Connex chainlock CWI



Forbindelsesled mellem masterlink og kæde, kæde og krog.

Connection link between master link and chain, chain and hook.

Art. No.	WLL 0°-45° kg	Code	e mm	c mm	s mm	d mm	b mm	g mm	Weight kg/pc.
03-6012005	500	CWI 5	36	7	10	7	34	13	0,05
03-6012007	1.000	CWI 7	54	9	13	9	51	17	0,12
03-6012010	2.000	CWI 10	73	13	18	13	70	25	0,33
03-6012013	3.200	CWI 13	92	17	23	17	86	29	0,70
03-6012016	5.000	CWI 16	104	21	28	21	105	37	1,22

Tilsvarende EN 1677-1.

Similar EN 1677-1.

CBHWI Connex bolt og sikkerhedssæt / CBHWI Connex bolt and safety set



Bolten er låst med rustfri spiralformet stål fjeder (mat. 1.4571), med forstørret syntetisk muffe til hjælp ved montering.

Suspension bolt is locked by stainless steel spiral pull spring (mat. 1.4571), within enlarged synthetic sleeve as practically mounting aid.

Art. No.	Code	For connecting link
03-6034005	CBHWI 5	CWI 5
03-6034007	CBHWI 7	CWI 7
03-6034010	CBHWI 10	CWI 10
03-6034013	CBHWI 13	CWI 13
03-6034016	CBHWI 16	CWI 16

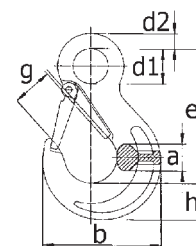
Der tages forbehold for trykfejl og udgåede varer / Specifications and products are subject to change

Lastekrog HSWI / Hook HSWI



Løftekrog med øje.
Sikkerhedspal kan leveres som reservedel.
Type med svirvel kan også leveres.

Lifting hook with eye.
Safety latch available as sparepart.
Type with swivel can also be delivered.



Art. No.	WLL 0°-45° kg	Code	e mm	h mm	a mm	d1 mm	d2 mm	b mm	g mm	Weight kg/pc.
03-6020005	500	HSWI 5	80	20	14	21	8	66	22	0,25
03-6020007	1.000	HSWI 7	104	28	19	24	11	90	29	0,60
03-6020010	2.000	HSWI 10	125	33	29	31	14	108	33	1,20
03-6020013	3.200	HSWI 13	155	43	34	39	17	134	43	2,10
03-6020016	4.500	HSWI 16	175	47	37	47	22	153	48	3,00
03-6020018	5.000	HSWI 16*	175	50	41	46	23	154	48	3,50

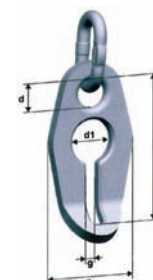
* Til brug med lastekrog HSWI 16 fra batchkode G og fremefter. 1. tal af tre-cifret batch kode.
* At use with eye sling hook HSWI 16 from batch code G onwards. 1. letter of three-digit batch code.

Opkorterkrug VLWI / Shortener VLWI



Rustfri stål opkorterkrug til opkortning af rustfri stål kæder, meget praktisk i anvendelse, i samlet system eller til eftermontering

Stainless steel shortener for shortening of stainless steel chains, extremely convenient in application, in assembled system or for retrofitting.



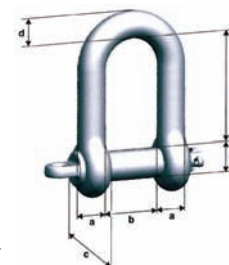
Art. No.	WLL 0°-45° kg	Type	e mm	a mm	d mm	d1 mm	g mm	Weight kg/pc.
03-6026506	750	VLWI 5/6	82	44	18	26	8	0,15
03-6026508	1.250	VLWI 7/8	111	68	22	34	11	0,40
03-6026510	2.000	VLWI 10	119	80	30	40	12	0,65
03-6026513	3.200	VLWI 13	150	92	34	52	16	1,20
03-6026516	5.000	VLWI 16	185	114	40	64	20	2,30

SMSWI sikkerhedssjækel / SMSWI safety shackle



Sikkerhedssjækel i rustfri stål, sænksmedet, stemplet, testet, kan med ekstra ophængsbolt og split anvendes som endefitting i kæde- og stålwire sling og pumpe kæder til løft af undervands-pumper og udluftninger, med maksimal sikkerhed, også under vibrationer. (Ikke direkte monterbar på kæde).

Stainless steel safety shackle, drop-forged, stamped, tested, with added suspension bolt and splint pin useable as end fitting in chain- and wire rope slings and pump chains for lifting of submersible pumps and breathers, with maximum safety, also under vibration. (Not directly mountable on chain).



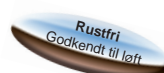
Art. No.	WLL 0°-45° kg	Type	e mm	a mm	b mm	d mm	d2 mm	c mm	Weight kg/pc.
03-3032005	500	SMSWI 4/5	22	8	17	8	9	18	0,07
03-3032008	1.250	SMSWI 6/7/8	40	12	25	12	13	25	0,22
03-3032010	2.000	SMSWI 10	60	16	32	16	17	32	0,52
03-3032013	3.200	SMSWI 13	50	13	25	13	16	32	0,35
03-3032016	5.000	SMSWI 16	64	16	32	16	19	38	0,55

Palsæt SFGWI / Safety latch SFGWI



Sikkerhedspal for HSWI lastekrog.

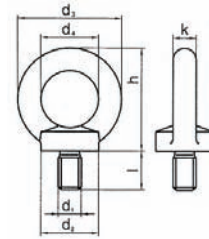
Safety latch for HSWI hook.



Art. No.	Code safety catch and spring	Corresponding eyehook
03-6031005	SFGWI 5	HSWI 5
03-6031007	SFGWI 7	HSWI 7
03-6031010	SFGWI 10	HSWI 10
03-6031013	SFGWI 13	HSWI 13
03-6031016	SFGWI 16	HSWI 16

Specifications and products are subject to change / Der tages forbehold for trykfejl og udgåede varer

Ringskrue DIN 580 - udg. 2003-08 Lifting eye bolt DIN 580 - edition 2003-08

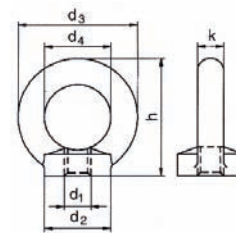


Ringskrue til almene formål.

Ringscrew for common purposes.

Art. No.	WLL t	d1	l	d2	d3	d4	h	k	Weight kg/100
04-2019006	0,070	M6	13,0	20	36	20	36	8	6
04-2019008	0,140	M8	13,0	20	36	20	36	8	6
04-2019010	0,230	M10	17,0	25	45	25	45	10	11
04-2019012	0,340	M12	20,5	30	54	30	53	12	18
04-2019016	0,700	M16	27,0	35	63	35	62	14	28
04-2019020	1,200	M20	30,0	40	72	40	71	16	45
04-2019024	1,800	M24	36,0	50	90	50	90	20	74

Ringmøtrik DIN 580 - udg. 2003-08 Lifting eye nut DIN 580 - edition 2003-08



Art. No.	WLL t	d1	d2	d3	d4	h	k	Weight kg/100
04-2019106	0,070	M6	20	36	20	36	8	5,00
04-2019108	0,140	M8	20	36	20	36	8	5,00
04-2019110	0,230	M10	25	45	25	45	10	9,00
04-2019112	0,340	M12	30	54	30	53	12	16,00
04-2019116	0,700	M16	35	63	35	62	14	24,00
04-2019120	1,200	M20	40	72	40	71	16	36,00
04-2019124	1,800	M24	50	90	50	90	20	72,00

Rundgodssjækkel

Type „H”

Rustfrie sjækler i rundgods udført i min. AISI 304.
* WLL t kun vejledende, ikke godkendt til løft.
Kan også leveres godkendt til løft.

Shackle

Round stainless steel shackles min. AISI 304.
* WLL t is only approx, not approved for lifting.
Can also be delivered approved for lifting.



Art. No.	WLL t *	A	d4	b1	r	h1	Weight kg/100
03-3021004	0,160	4 mm - 5/32"	M4	8	12	16	0,80
03-3021005	0,250	5 mm - 3/16"	M5	10	15	20	1,80
03-3021006	0,375	6 mm - 1/4"	M6	12	18	24	2,60
03-3021008	0,625	8 mm - 5/16"	M8	16	24	32	5,80
03-3021010	1,000	10 mm - 3/8"	M10	20	30	40	11,30
03-3021012	1,500	12 mm - 1/2"	M12	25	36	48	20,90
03-3021016	2,750	16 mm - 5/8"	M16	32	48	64	49,80
03-3021020	3,750	20 mm - 3/4"	M20	38	60	80	92,50
03-3021022	4,750	22 mm - 7/8"	M22	44	66	88	136,00
03-3021024	5,750	24 mm - 1"	M24	50	75	100	192,40t



Rundgodssjækkel

Type „D”

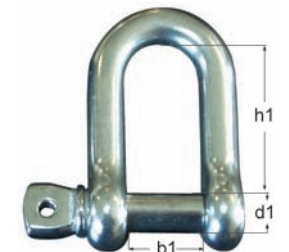
Rustfrie sjækler i rundgods udført i min. AISI 304.
Ej godkendt til løft.
Kan også leveres godkendt til løft.

Shackle

Round stainless steel shackles min. AISI 304.
Not approved for lifting.
Can also be delivered approved for lifting.



Art. No.	WLL t *	A	d1	b1	h1	Weight kg/100
03-3020004	0,160	4 mm - 5/32"	M4	8	16	0,75
03-3020005	0,250	5 mm - 3/16"	M5	10	19	1,60
03-3020006	0,375	6 mm - 1/4"	M6	12	24	2,52
03-3020008	0,625	8 mm - 5/16"	M8	16	32	5,80
03-3020010	1,000	10 mm - 3/8"	M10	20	40	11,10
03-3020012	1,500	12 mm - 1/2"	M12	25	48	20,20
03-3020016	2,750	16 mm - 5/8"	M16	32	64	47,40
03-3020020	3,750	20 mm - 3/4"	M20	38	76	79,30
03-3020022	4,750	22 mm - 7/8"	M22	44	88	126,00
03-3020024	5,750	24 mm - 1"	M24	50	100	186,40



Kan også leveres med kærnv.

Can also be supplied with sink/screw pin.

Rustfri sjækler AISI 304 Stainless shackles AISI 304

Rustfri sjækler i pladeudførelse AISI 304.
Ej godkendt til løft.

Stainless steel plateshackles AISI 304.
Not approved for lifting.

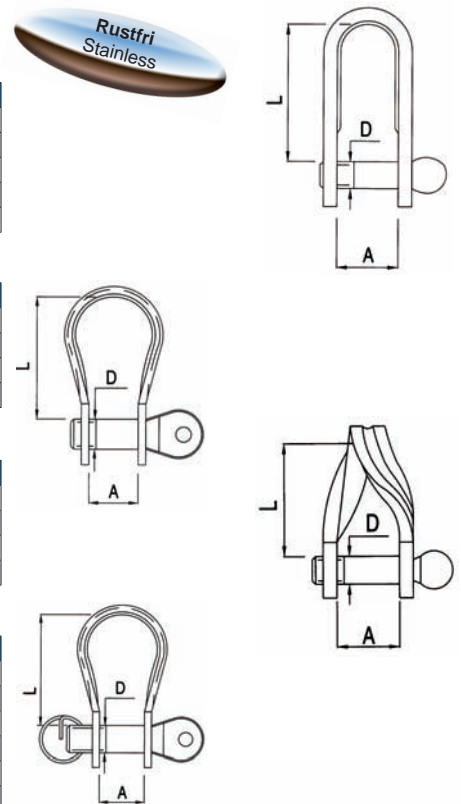


Art. No.	Breaking load kg	D mm	A mm	L mm	Pack pcs.	Weight kg/100
03-3022201	600	4	11	20	100	0,5
03-3022204	1.000	5	15	36	100	1,8
03-3022205	1.100	5	13	26	100	1,5
03-3022206	1.650	6	15	40	25	2,9
03-3022211	2.750	8	20	41	25	5,0

Art. No.	Breaking load kg	D mm	A mm	L mm	Pack pcs.	Weight kg/100
03-3022301	2.000	M6	14	23	50	2,5
03-3022302	3.000	M8	17	31	50	4,5
03-3022303	4.800	M10	21	40	25	8,5
03-3022304	7.000	M12	25	50	25	16,0

Art. No.	Breaking load kg	D mm	A mm	L mm	Weight kg/100
03-3022401	1.200	M5	12	22	1,5
03-3022402	1.200	M5	12	33	1,7
03-3022403	2.000	M6	14	36	2,9
03-3022404	3.000	M8	18	36	5,0

Art. No.	Breaking load kg	D mm	A mm	L mm	Pack pcs.	Weight kg/100
03-3022501	2.000	M6	14	23	50	2,7
03-3022502	2.000	M6	14	40	50	3,1
03-3022503	3.000	M8	17	31	50	4,8
03-3022504	3.000	M8	18	42	50	5,3
03-3022505	4.800	M10	21	40	25	9,0
03-3022506	7.000	M12	25	50	25	16,5



Specifications and products are subject to change / Der tages forbehold for trykfejl og udgåede varer