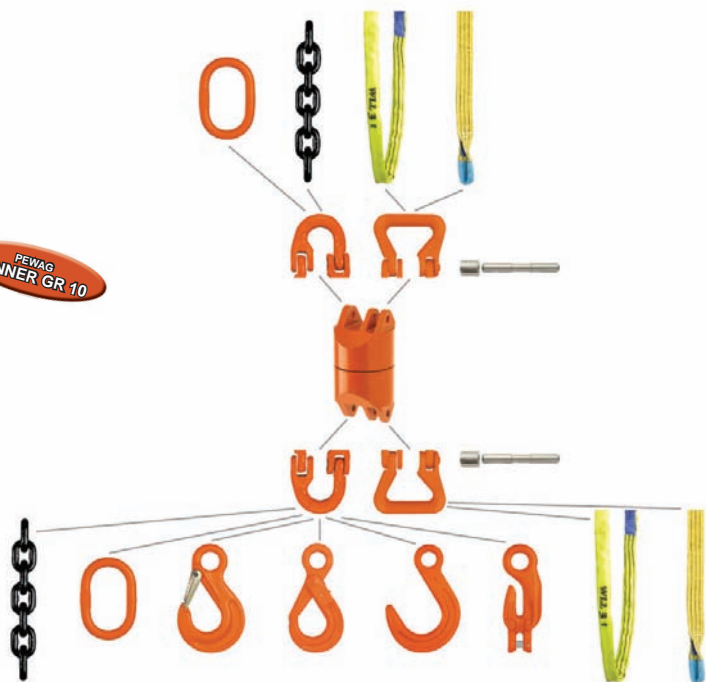


## Rulleleje drejeled / Roller bearing swivel

**pewag**  
austria

PEWAG  
WINNER GR 10



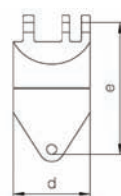
Kan rotere under last grundet rullelejer.  
Kan monteres med tilbehør fra Pewag Connex systemet med samleled CW eller CARW.  
Tilladt arbejdetemperatur: 100°C.

Can be rotated when loaded because of roller bearing.  
Can be mounted with accessories for the Connex System with CW or CARW.  
Admissible operating temperature: 100°C.

Art. No.	Load capacity kg	Type	e mm	d mm	Weight kg/pc
03-8017007	1.900	DFW 7	91	53	1,12
03-8017008	2.500	DFW 8	92	53	1,12
03-8017010	4.000	DFW 10	111	63	2,00

Iht. EN 1677-1 med øget belastning.

Acc. to EN 1677-1 with increased load capacity.



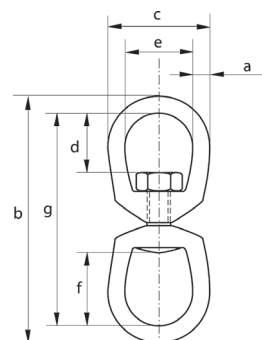
## Lossesvirvel G-7713 / Regular swivel G-7713



Materiale: Højstyrke stål, sejhærdet.  
Sikkerhedsfaktor: MBL 5 x WLL.  
Standard: Generelt til RR-C-271, type VII, klasse 2.  
Finish: Varmgalvaniseret.

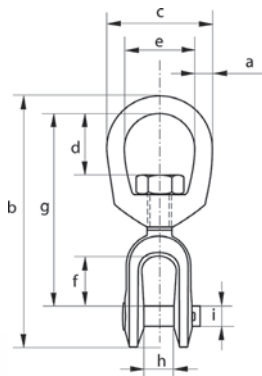
Material: High tensile steel, quenched and tempered.  
Safety factor: MBL equals 5 x WLL  
Standard: Generally to RR-C-271, Type VII, Class 2.  
Finish: Hot dipped galvanised.

Art. No.	WLL t	a mm	b mm	c mm	d mm	e mm	f mm	g mm	Weight each kg
03-8015001	0.39	6	87	32	17	19	27	75	0,10
03-8015002	0.57	8	106	41	21	25	32	90	0,18
03-8015003	1.02	10	130	51	24	32	38	110	0,32
03-8015004	1.6	13	164	64	33	38	51	138	0,60
03-8015005	2.4	16	199	76	40	44	60	167	1,13
03-8015006	3.3	19	221	89	44	51	67	183	1,82
03-8015007	4.5	22	257	102	52	57	78	213	2,83
03-8015008	5.7	25	295	114	59	64	89	245	4,06
03-8015009	8.2	32	343	143	74	80	98	273	7,21
03-8015010	20.5	38	522	178	109	102	150	425	20,7



## Lossesvirvel G-7723 / Regular swivel G-7723

Art. No.	WLL t	a mm	b mm	c mm	d mm	e mm	f mm	g mm	h mm	i mm	Weight each kg
03-8015101	0.39	6	86	32	17	19	22	67	12	6	0,10
03-8015102	0.57	8	98	41	21	25	22	75	13	8	0,18
03-8015103	1.02	10	121	51	24	32	27	92	16	10	0,32
03-8015104	1.6	13	154	64	33	38	33	114	19	13	0,60
03-8015105	2.4	16	186	76	40	44	38	135	24	16	1,13
03-8015106	3.3	19	211	89	44	51	44	154	28	19	1,82
03-8015107	4.5	22	236	102	52	57	52	178	30	22	2,43
03-8015108	5.7	25	299	114	71	64	71	217	44	29	4,46
03-8015109	8.2	32	334	143	71	80	71	242	52	35	7,43
03-8015110	20.5	38	493	178	108	102	108	364	73	52	22,13



Der tages forbehold for trykfejl og udgåede varer / Specifications and products are subject to change

## Kuglelejesvirvel

## Bearing swivel



Drejbar under last.

Alle svirvler individuelt prøvebelastet og certificeret.

Alle kroge forsynet med sikkerhedspal.

Alle gaffler komplet med bolte, møtrikker og splitter.

Forsynet med smøreneppel.

MÅ IKKE ANVENDES TIL NEDBRYDNINGSKUGLER.

Andre typer og kapaciteter op til 600 tons kan leveres efter opgave.

**Vigtigt:** Crosby svirvler bør kun anvendes med anbefalet stålwire.

Designed to swivel under load.

All swivels individually proof tested with certification.

All hooks furnished with latches assembled.

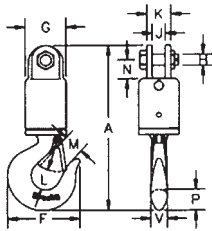
All jaws complete with bolts, nuts and cotter pins.

Pressure lube fitting provided.

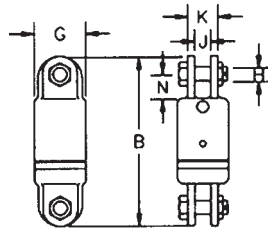
NOT TO BE USED ON DEMOLITION (WRECKING) BALLS.

Other types and capacities up to 600 tons, available to meet your requirements.

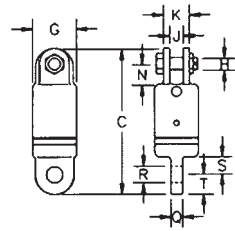
**Important:** Crosby Swivels should only be used with the recommended wire rope.



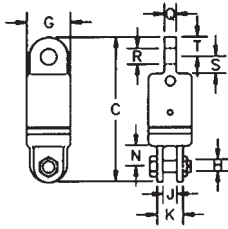
S-1 Gaffel/Krog  
S-1 Jaw/Hook



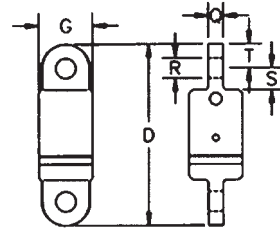
S-2 Gaffel/Gaffel  
S-2 Jaw/Jaw



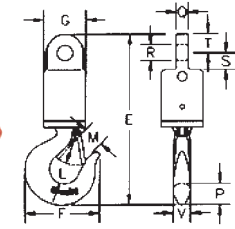
S-3 Gaffel/Øje  
S-3 Jaw/Eye



S-4 Øje/Gaffel  
S-4 Eye/Jaw



S-5 Øje/Øje  
S-5 Eye/Eye



S-6 Øje/Krog  
S-6 Eye/Hook

WLL* t	A	B	C	D	E	F	G	H	J	K	L	M	N	O	P	Q	R	S	T	V
3**	291	236	237	239	292	123	70,0	19,1	22,4	41,1	38,9	35,8	33,3	25,4	36,6	19,1	26,2	28,4	31,8	28,4
5**	339	262	256	249	332	160	76,0	22,4	25,4	57,0	49,3	42,9	41,1	28,4	46,0	25,4	32,5	31,8	31,8	36,6
8½**	418	321	311	302	408	192	102	25,4	39,5	71,5	62,5	56,5	54,0	35,1	57,0	31,8	35,8	41,1	38,1	41,1
10**	502	425	409	394	486	212	114	38,1	44,5	86,0	66,0	61,0	89,0	44,5	66,0	42,9	42,9	70,0	47,8	49,3
15**	565	435	425	416	540	263	127	38,1	44,5	86,0	71,5	81,0	89,0	44,5	76,0	49,3	51,5	70,0	54,0	60,5
25	680	527	546	565	699	346	152	51,0	51,0	117	87,5	92,0	93,5	60,5	93,0	57,0	58,5	98,5	60,5	76,0
35	760	527	546	565	780	357	165	51,0	51,0	117	98,5	95,5	93,5	60,5	116	57,0	58,5	98,5	60,5	81,0
45	891	641	657	673	907	392	178	57,0	63,5	127	121	108	102	76,0	129	63,5	64,5	102	76,0	82,5

Dimensioner i mm.

\* Individuelt prøvebelastet 2 x WLL. Brudlast er 5 x WLL.

\*\* S-1 og S-6 omfatter 319N krog.

Dimensions in mm.

\* Individually proof tested to 2 times the WLL. Ultimate load is 5 times the WLL.

\*\* S-1 and S-6 incorporate 319N style hook.

## Kugleleje drejeled / Ball bearing swivel

Stål.

Konisk tryk rulleleje.

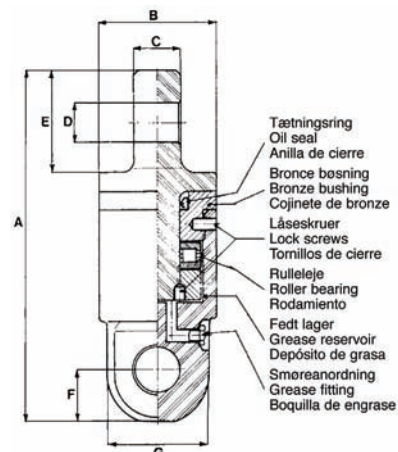
Smørbare.

Steel.

Tapered roller thrust bearing.

Greaseable.

Art. No.	SWL 5:1	Type	A mm	B mm	C mm	D mm	E mm	F mm	G mm	Weight kg
03-8016101	1,0	401	126	43	16	15	36	18	35	0,60
03-8016102	2,0	402	157	54	20	20	45	22	45	1,50
03-8016103	3,0	403	189	65	27	26	55	28	55	2,75
03-8016105	5,0	405	220	70	33	30	64	33	60	3,90
03-8016108	8,0	408	250	85	42	34	73	39	75	6,70
03-8016112	12,0	412	295	95	50	41	86	45	86	10,60
03-8016117	17,0	417	360	120	57	45	113	55	108	18,50
03-8016122	22,0	422	435	131	60	52	118	63	118	29,70
03-8016132	32,0	432	500	160	65	59	132	73	140	45,00
03-8016145	45,0	445	700	220	102	74	190	100	200	130,00



Specifications and products are subject to change / Der tages forbehold for trykfejl og udgåede varer